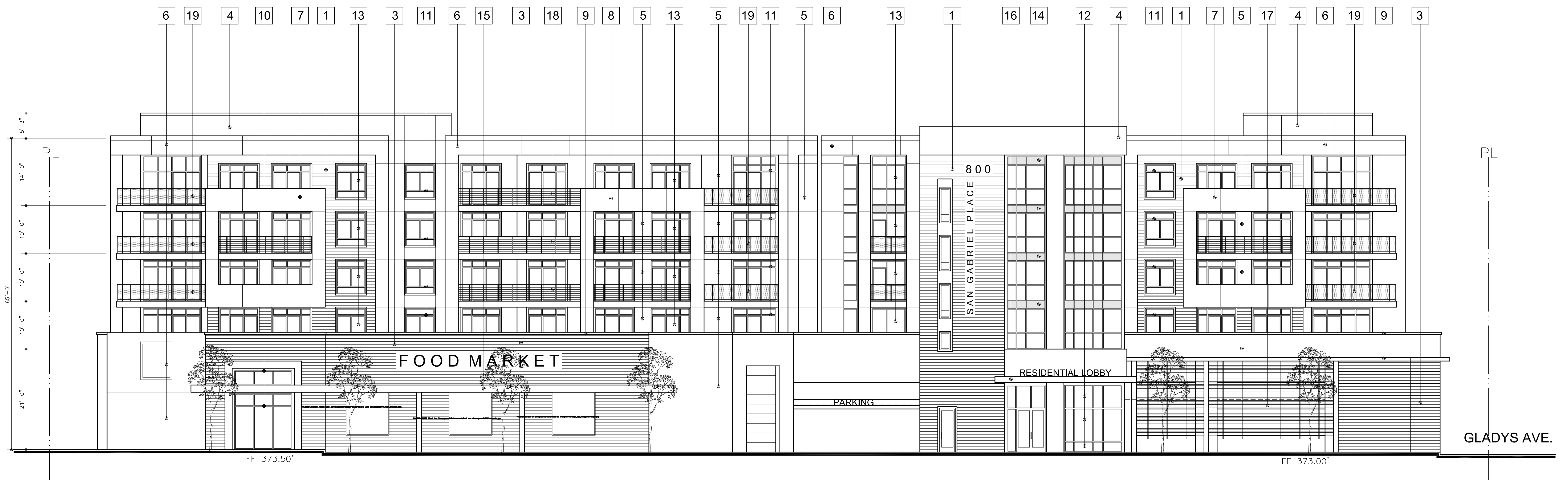




800 PLAZA EAST ELEVATION

EXTERIOR FINISH SCHEDULE			
NAME	DESCRIPTION	COLOR	REMARKS
1	WALL SIDING	FIBER CEMENT WOOD SIDING PANEL	ASH AWP 3030 HORIZONTAL BY "NICHHA" OR EQ.
2	WALL SIDING	FIBER CEMENT WOOD SIDING PANEL	BARK AWP 3030 HORIZONTAL BY "NICHHA" OR EQ.
3	WALL SIDING	FIBER CEMENT WOOD SIDING PANEL	REDWOOD AWP 3030 HORIZONTAL BY "NICHHA" OR EQ.
4	WALL STUCCO	SMOOTH W/ ELASTOMERIC PAINT	FORMAL GRAY DE6352 BY "DUNN EDWARDS"
5	WALL STUCCO	SMOOTH W/ ELASTOMERIC PAINT	SILVER LAKE DE6379 BY "DUNN EDWARDS"
6	WALL PANEL @ POP-OUT	METAL WALL PANEL SYSTEM	SILVER METALIC "CLASSIC" SERIES BY "ALUCOBOND" PR EQ.
7	WALL PANEL @ POP-OUT	METAL WALL PANEL SYSTEM	HAZELNUT MICA "CLASSIC" SERIES BY "ALUCOBOND" PR EQ.
8	WALL PANEL @ POP-OUT	METAL WALL PANEL SYSTEM	DARK BRONZE "CLASSIC" SERIES BY "ALUCOBOND" PR EQ.
9	CAP / MOLDING @ COMMERCIAL	SMOOTH W/ ELASTOMERIC PAINT	SILVER LAKE DE6379 BY "DUNN EDWARDS"
10	DOOR / WINDOW FRAME COMMERCIAL	ALUMN.	POWDER COATED LIGHT GRAY COLOR BY "MILGARD" OR EQ.
11	DOOR / WINDOW FRAME RESIDENTIAL	VINYL	MANUFACTURER COLOR WHITE COLOR BY "MILGARD" OR EQ.
12	GLAZING COMMERCIAL	DUAL GLAZING	CLEAR LOW E GLASS BY "PPG" OR EQ.
13	GLAZING RESIDENTIAL	ALUM. THERMAL BREAK FRAMING W/PPG SOLARBAN 90 LOW E COATING	LIGHT TINTED LOW E GLASS BY "PPG" OR EQ.
14	GLAZING SPANDREL	NON-SPANDREL GLAZING	OPAQUE
15	CANOPY COMMERCIAL	ALUMINUM / PAINT FINISH	SILVER LAKE DE6379
16	CANOPY RESIDENTIAL	ALUMINUM / PAINT FINISH	WHISPER DEW340
17	ALUMN LOUVER SCREEN	ALUMINUM / PAINT FINISH	FORMAL GRAY DE6352
18	ALUMN. RAILING	ALUMINUM / PAINT FINISH	MANUFACTURER COLOR GRAY BY "HANSEN" OR EQ.
19	GLASS RAILING	ALUMINUM / GLASS RAILING SYSTEM	MANUFACTURER COLOR BY "HANSEN" OR EQ.

1. WINDOWS AND DOORS SHALL BE RECESSED A MINIMUM OF 2-INCHES FROM THE EXTERIOR WALLS OF THE BUILDING.
 2. STOREFRONT GLAZING TO HAVE MINIMUM TINT / COLOR ONLY TO MEET BUILDING CODE. NO ADDITIONAL TINT / COLOR ON GLAZING.



800 PLAZA SOUTH ELEVATION