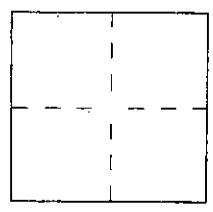


CORNER RECORD <sup>PWFB</sup> 1425

Document Number 464

City of SAN GABRIEL County of LOS ANGELES, California

Brief Legal Description WALNUT STREET & E. WELLS STREET



CORNER TYPE

- Government Corner  Control
- Meander  Property
- Rancho  Other

Date of Survey July 22, 2005

COORDINATES (Optional)

N. \_\_\_\_\_  
 E. \_\_\_\_\_  
 Zone \_\_\_\_\_ NAD27  NAD83   
 NAD83 Epoch \_\_\_\_\_  
 Elev. \_\_\_\_\_  
 Vert. Datum: NGVD29  NAVD88   
 Meas. Units: Metric  Imperial   
 U.S. Survey foot

Corner — Left as found  Found and tagged  Established  Reestablished  Rebuilt

Identification and type of corner found; Evidence used to identify or procedure used to establish or reestablish the corner:  
SEE PAGE 2.

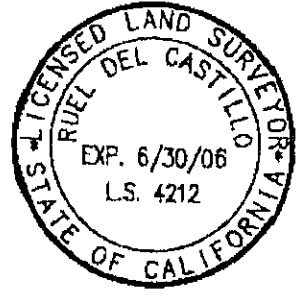
A description of the physical condition of the monument as found and as set or reset: SEE PAGE 2.

SURVEYOR'S STATEMENT

This Corner Record was prepared by me or under my direction in conformance with the Land Surveyor's Act on SEPTEMBER 6, 2005

Signed Ruel del Castillo L.S. or R.C.E. No. 4212

EXP. 6/30/06



COUNTY SURVEYOR'S STATEMENT

This Corner Record was received SEP 14 2005

and examined and filed OCT 12 2005

Signed Carl M. O'Bryan L.S. or R.C.E. No. 6388

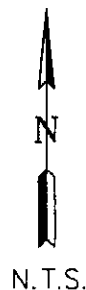
Title DEPUTY COUNTY SURVEYOR



County Surveyor's Comment \_\_\_\_\_

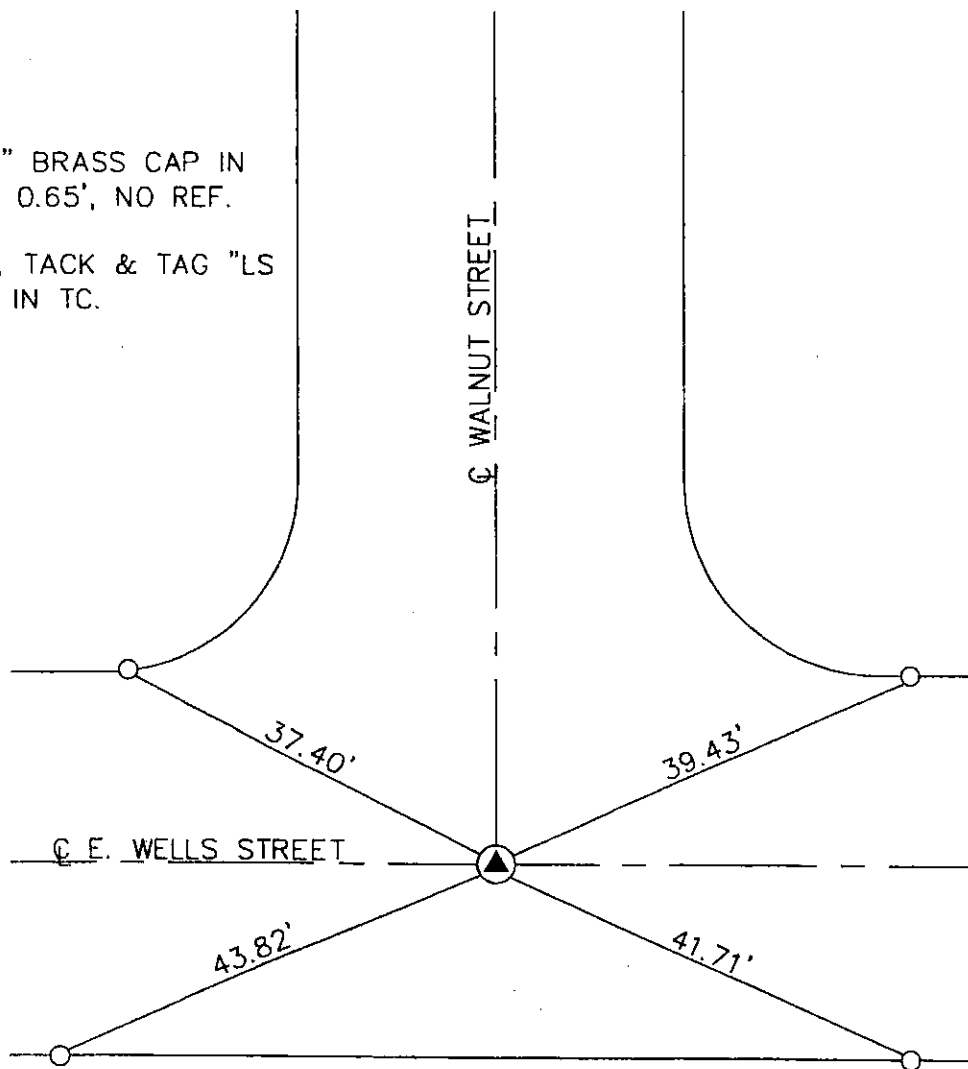
File 10-5-05

WALNUT STREET & E. WELLS STREET



LEGEND:

- ⊙ FD. 1 1/2" BRASS CAP IN WELL, DN. 0.65', NO REF.
- SET LEAD, TACK & TAG "LS 4212 TIE" IN TC.



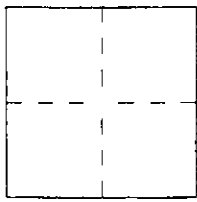
NOTE: THESE TIES ARE FOR THE PURPOSE OF PERPETUATING THE FOUND MONUMENTATION. NO CLAIM IS MADE AS TO THE RELATIONSHIP OF THE POINTS OR LINES SHOWN HEREON TO THE TRUE BOUNDARY LOCATIONS.

PWFB 1425  
CORNER RECORD

Document Number 466

City of SAN GABRIEL County of LOS ANGELES, California

Brief Legal Description WALNUT STREET & E. WELLS STREET



CORNER TYPE

- Government Corner  Control
- Meander  Property
- Rancho  Other

Date of Survey July 22, 2005

COORDINATES (Optional)

N. \_\_\_\_\_  
 E. \_\_\_\_\_  
 Zone \_\_\_\_\_ NAD27  NAD83   
 NAD83 Epoch \_\_\_\_\_  
 Elev. \_\_\_\_\_  
 Vert. Datum: NGVD29  NAVD88   
 Meas. Units: Metric  Imperial   
 U.S. Survey foot

Corner — Left as found  Found and tagged  Established  Reestablished  Rebuilt

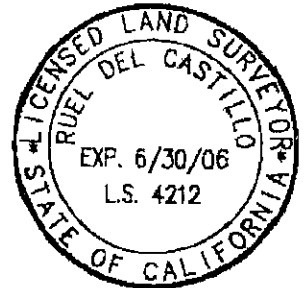
Identification and type of corner found; Evidence used to identify or procedure used to establish or reestablish the corner:  
SEE PAGE 2.

A description of the physical condition of the monument as found and as set or reset: SEE PAGE 2.

SURVEYOR'S STATEMENT

This Corner Record was prepared by me or under my direction in conformance with the Land Surveyor's Act on SEPTEMBER 6, 2005

Signed Ruel del Castillo L.S. or R.C.E. No. 4212  
EXP. 6/30/06



COUNTY SURVEYOR'S STATEMENT

This Corner Record was received SEP 14 2005

and examined and filed OCT 12 2005

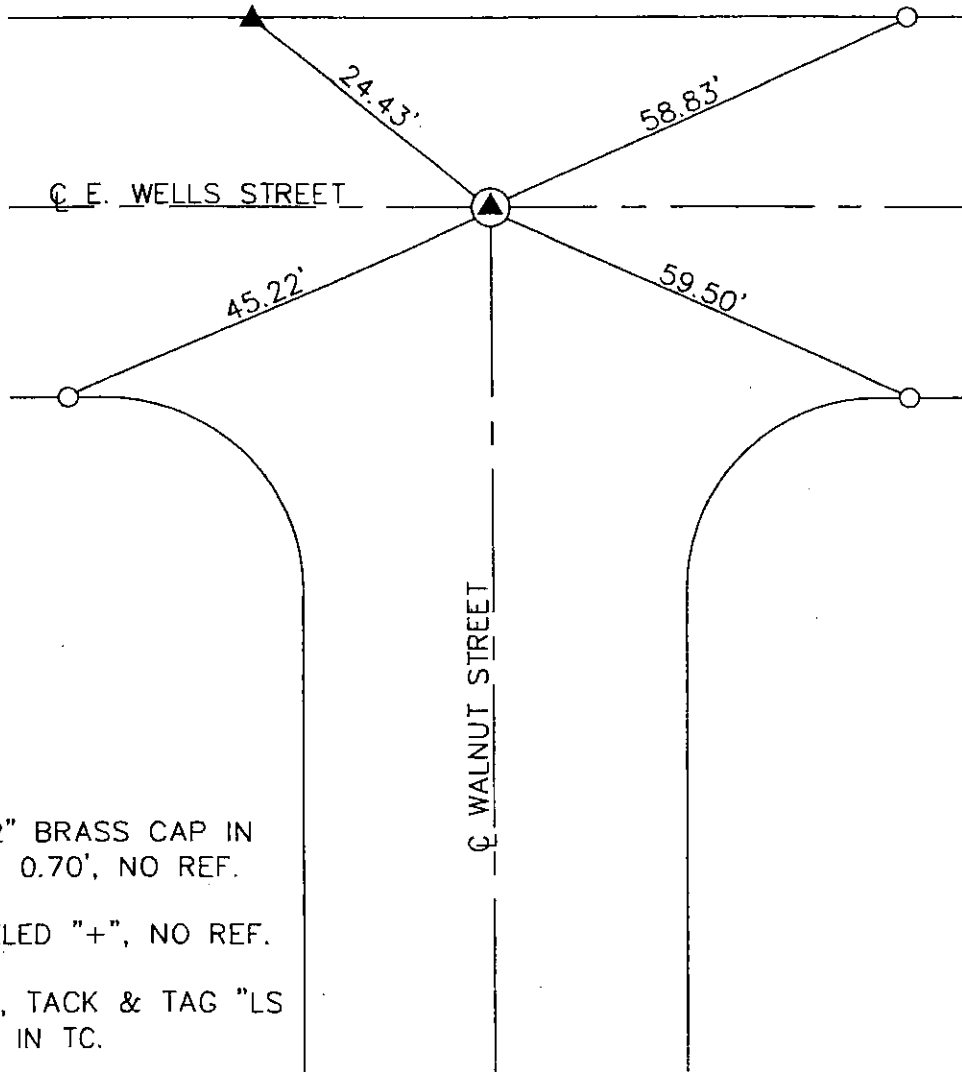
Signed Curf M. O'Bryan L.S. or R.C.E. No. 6388  
Title DEPUTY COUNTY SURVEYOR



County Surveyor's Comment \_\_\_\_\_

SMG 10-5-05

WALNUT STREET & E. WELLS STREET



LEGEND:

- ⊙ FD. 1 1/2" BRASS CAP IN WELL, DN. 0.70', NO REF.
- ▲ FD. CHISELED "+", NO REF.
- SET LEAD, TACK & TAG "LS 421'2 TIE" IN TC.

NOTE: THESE TIES ARE FOR THE PURPOSE OF PERPETUATING THE FOUND MONUMENTATION. NO CLAIM IS MADE AS TO THE RELATIONSHIP OF THE POINTS OR LINES SHOWN HEREON TO THE TRUE BOUNDARY LOCATIONS.

CORNER RECORD PWFB 1425

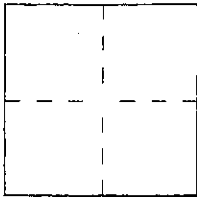
Document Number 468

City of SAN GABRIEL

County of LOS ANGELES

California

Brief Legal Description S. CALIFORNIA STREET & E. CHESTNUT AVENUE



CORNER TYPE

- Government Corner  Control
- Meander  Property
- Rancho  Other

Date of Survey July 22, 2005

COORDINATES (Optional)

- N. \_\_\_\_\_
- E. \_\_\_\_\_
- Zone \_\_\_\_\_ NAD27  NAD83
- NAD83 Epoch \_\_\_\_\_
- Elev. \_\_\_\_\_
- Vert. Datum: NGVD29  NAVD88
- Meas. Units: Metric  Imperial
- U.S. Survey foot

Corner — Left as found  Found and tagged  Established  Reestablished  Rebuilt

Identification and type of corner found; Evidence used to identify or procedure used to establish or reestablish the corner: SEE PAGE 2.

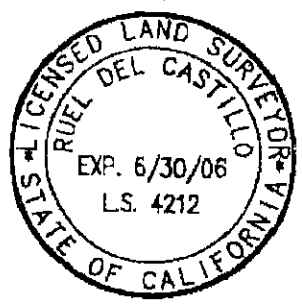
A description of the physical condition of the monument as found and as set or reset: SEE PAGE 2.

SURVEYOR'S STATEMENT

This Corner Record was prepared by me or under my direction in conformance with the Land Surveyor's Act on SEPTEMBER 6, 2005

Signed Ruel del Castillo L.S. or R.C.E. No. 4212

EXP. 6/30/06



COUNTY SURVEYOR'S STATEMENT

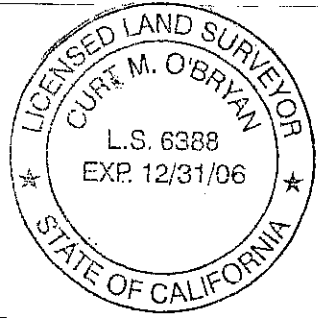
This Corner Record was received SEP 14 2005

and examined and filed OCT 12 2005

Signed Curt M. O'Bryan L.S. or R.C.E. No. 6388

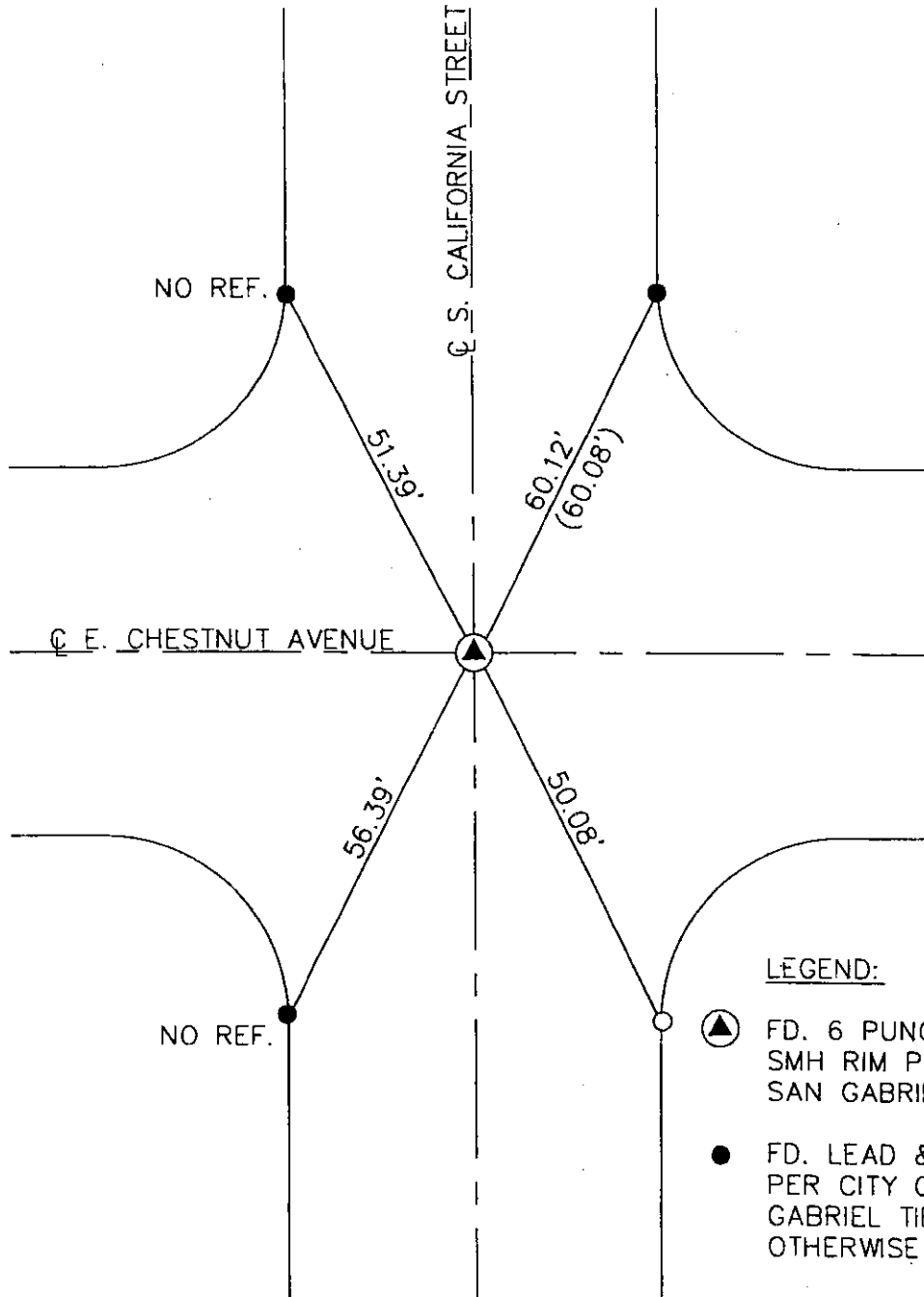
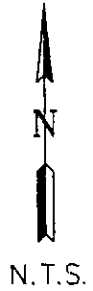
Title DEPUTY COUNTY SURVEYOR

County Surveyor's Comment




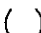


SMG 10-6-5

S. CALIFORNIA STREET & E. CHESTNUT AVENUE



LEGEND:

- 
 FD. 6 PUNCH MARKS ON SMH RIM PER CITY OF SAN GABRIEL TIE 36.
- 
 FD. LEAD & TACK IN TC PER CITY OF SAN GABRIEL TIE 36, UNLESS OTHERWISE NOTED.
- 
 SET LEAD, TACK & TAG "LS 4212 TIE" IN TC..
- 
 RECORD PER CITY OF SAN GABRIEL TIE 36

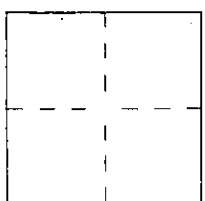
NOTE: THESE TIES ARE FOR THE PURPOSE OF PERPETUATING THE FOUND MONUMENTATION. NO CLAIM IS MADE AS TO THE RELATIONSHIP OF THE POINTS OR LINES SHOWN HEREON TO THE TRUE BOUNDARY LOCATIONS.

CORNER RECORD <sup>PWFB</sup> 1425

Document Number 470

City of SAN GABRIEL County of LOS ANGELES, California

Brief Legal Description S. CALIFORNIA STREET & E. WELLS STREET



CORNER TYPE

- Government Corner  Control
- Meander  Property
- Rancho  Other

Date of Survey July 22, 2005

COORDINATES (Optional)

N. \_\_\_\_\_  
 E. \_\_\_\_\_  
 Zone \_\_\_\_\_ NAD27  NAD83   
 NAD83 Epoch \_\_\_\_\_  
 Elev. \_\_\_\_\_  
 Vert. Datum: NGVD29  NAVD88   
 Meas. Units: Metric  Imperial   
 U.S. Survey foot

Corner — Left as found  Found and tagged  Established  Reestablished  Rebuilt

Identification and type of corner found; Evidence used to identify or procedure used to establish or reestablish the corner:  
SEE PAGE 2.

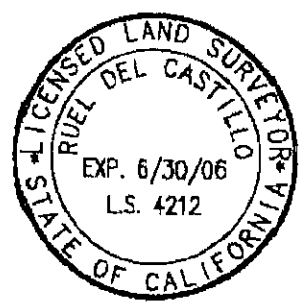
A description of the physical condition of the monument as found and as set or reset: SEE PAGE 2.

SURVEYOR'S STATEMENT

This Corner Record was prepared by me or under my direction in conformance with the Land Surveyor's Act on SEPTEMBER 6, 2005

Signed Ruel del Castillo L.S. or R.C.E. No. 4212

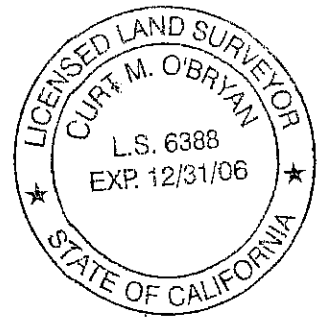
EXP. 6/30/06



COUNTY SURVEYOR'S STATEMENT

This Corner Record was received SEP 14 2005 and examined and filed OCT 12 2005

Signed Curt M. O'Bryan L.S. or R.C.E. No. 6388  
Title DEPUTY COUNTY SURVEYOR



County Surveyor's Comment \_\_\_\_\_

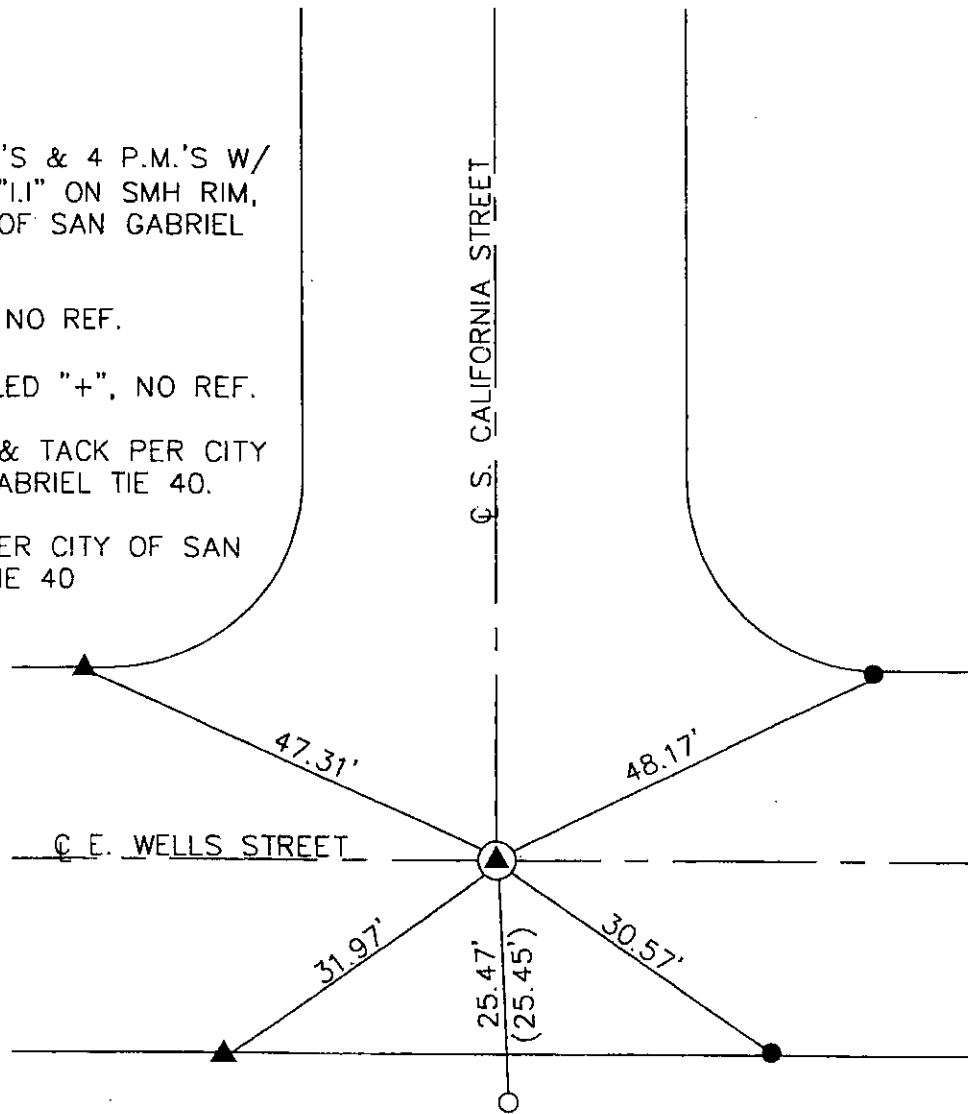
SMG 10-6-5

S. CALIFORNIA STREET & E. WELLS STREET



LEGEND:

- ⊙ FD. 4 P.M.'S & 4 P.M.'S W/  
CHISELED "IJ" ON SMH RIM,  
PER CITY OF SAN GABRIEL  
TIE 40.
- FD. LEAD, NO REF.
- ▲ FD. CHISELED "+", NO REF.
- FD. LEAD & TACK PER CITY  
OF SAN GABRIEL TIE 40.
- ( ) RECORD PER CITY OF SAN  
GABRIEL TIE 40



NOTE: THESE TIES ARE FOR THE PURPOSE OF PERPETUATING THE FOUND MONUMENTATION. NO CLAIM IS MADE AS TO THE RELATIONSHIP OF THE POINTS OR LINES SHOWN HEREON TO THE TRUE BOUNDARY LOCATIONS.



CORNER RECORD

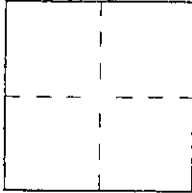
Document Number 472

City of SAN GABRIEL

County of LOS ANGELES

California

Brief Legal Description LAFAYETTE STREET & E. WELLS STREET



CORNER TYPE

- Government Corner  Control
- Meander  Property
- Rancho  Other

Date of Survey July 22, 2005

COORDINATES (Optional)

N. \_\_\_\_\_  
 E. \_\_\_\_\_  
 Zone \_\_\_\_\_ NAD27  NAD83   
 NAD83 Epoch \_\_\_\_\_  
 Elev. \_\_\_\_\_  
 Vert. Datum: NGVD29  NAVD88   
 Meas. Units: Metric  Imperial   
 U.S. Survey foot

Corner — Left as found  Found and tagged  Established  Reestablished  Rebuilt

Identification and type of corner found; Evidence used to identify or procedure used to establish or reestablish the corner:  
SEE PAGE 2.

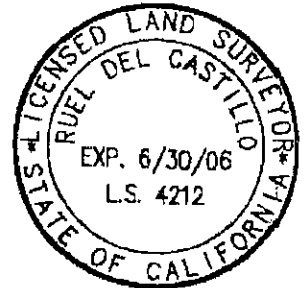
A description of the physical condition of the monument as found and as set or reset: SEE PAGE 2.

SURVEYOR'S STATEMENT

This Corner Record was prepared by me or under my direction in conformance with the Land Surveyor's Act on SEPTEMBER 6, 2005

Signed Ruel del Castillo L.S. or R.C.E. No. 4212

EXP. 6/30/06



COUNTY SURVEYOR'S STATEMENT

This Corner Record was received SEP 14 2005

and examined and filed OCT 12 2005

Signed Curt M. O'Bryan L.S. or R.C.E. No. 6388

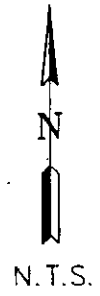
Title DEPUTY COUNTY SURVEYOR



County Surveyor's Comment \_\_\_\_\_

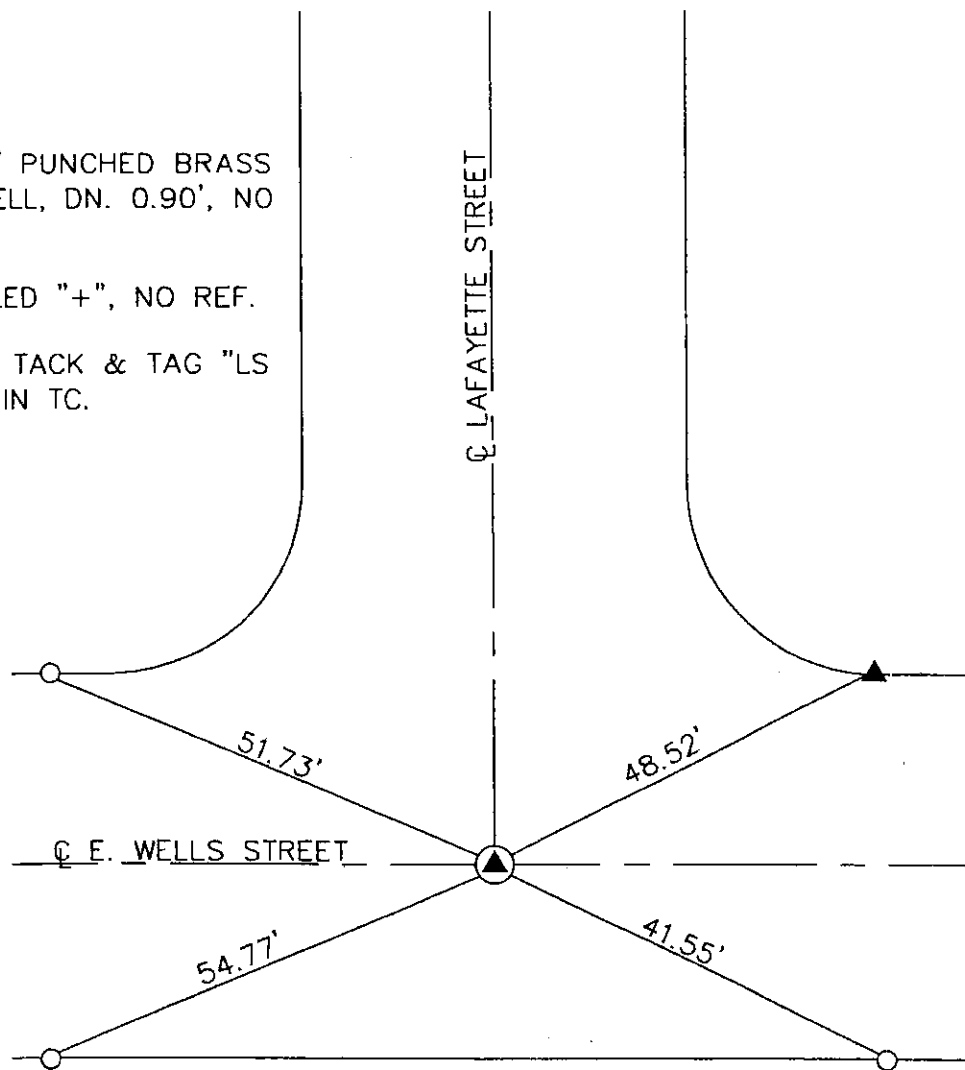
MLB 10-5-05

LAFAYETTE STREET & E. WELLS STREET



LEGEND:

- ▲ FD. 1 1/2" PUNCHED BRASS DISK IN WELL, DN. 0.90', NO REF.
- ▲ FD. CHISELED "+", NO REF.
- SET LEAD, TACK & TAG "LS 4212 TIE" IN TC.



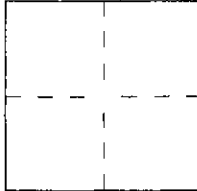
NOTE: THESE TIES ARE FOR THE PURPOSE OF PERPETUATING THE FOUND MONUMENTATION. NO CLAIM IS MADE AS TO THE RELATIONSHIP OF THE POINTS OR LINES SHOWN HEREON TO THE TRUE BOUNDARY LOCATIONS.

CORNER RECORD PWFB 1425

Document Number 474

City of SAN GABRIEL County of LOS ANGELES, California

Brief Legal Description LAFAYETTE STREET & E. CHESTNUT AVENUE



CORNER TYPE
Government Corner [ ] Control [ ]
Meander [ ] Property [ ]
Rancho [ ] Other [x]
Date of Survey July 22, 2005

COORDINATES (Optional)
N.
E.
Zone NAD27 [ ] NAD83 [ ]
NAD83 Epoch
Elev.
Vert. Datum: NGVD29 [ ] NAVD88 [ ]
Meas. Units: Metric [ ] Imperial [ ]
U.S. Survey foot [ ]

Corner — Left as found [x] Found and tagged [ ] Established [ ] Reestablished [ ] Rebuilt [ ]

Identification and type of corner found; Evidence used to identify or procedure used to establish or reestablish the corner:
SEE PAGE 2.

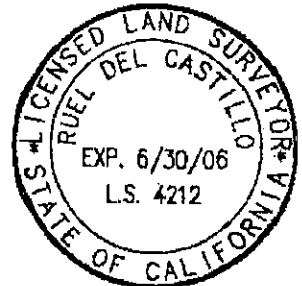
A description of the physical condition of the monument as found and as set or reset: SEE PAGE 2.

SURVEYOR'S STATEMENT

This Corner Record was prepared by me or under my direction in conformance with the Land Surveyor's Act on SEPTEMBER 6, 2005

Signed Ruel del Castillo L.S. or R.C.E. No. 4212

EXP. 6/30/06



COUNTY SURVEYOR'S STATEMENT

This Corner Record was received SEP 14 2005

and examined and filed OCT 12 2005

Signed Curt M. O'Bryan L.S. or R.C.E. No. 6388

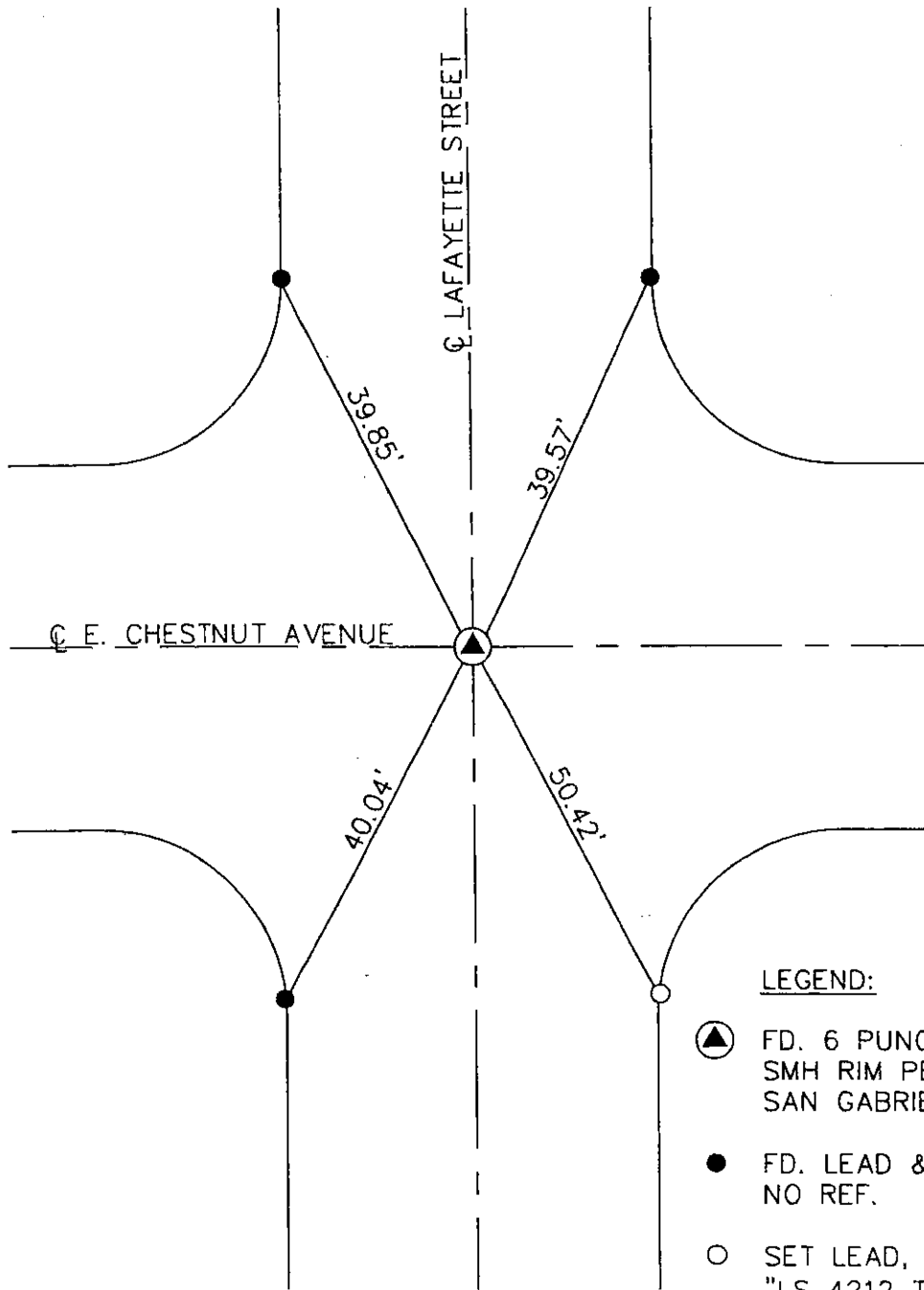
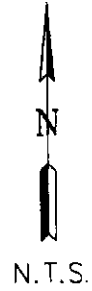
Title DEPUTY COUNTY SURVEYOR



County Surveyor's Comment

SM 6 10-6-5

# LAFAYETTE STREET & E. CHESTNUT AVENUE



LEGEND:

- ⊙ (with triangle) FD. 6 PUNCH MARKS ON SMH RIM PER CITY OF SAN GABRIEL TIE 37.
- FD. LEAD & TACK IN TC, NO REF.
- SET LEAD, TACK & TAG "LS 4212 TIE" IN TC.

NOTE: THESE TIES ARE FOR THE PURPOSE OF PERPETUATING THE FOUND MONUMENTATION. NO CLAIM IS MADE AS TO THE RELATIONSHIP OF THE POINTS OR LINES SHOWN HEREON TO THE TRUE BOUNDARY LOCATIONS.

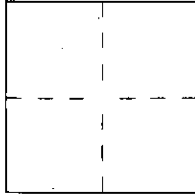
CORNER RECORD PWFB 1425

Document Number 476

City of SAN GABRIEL

County of LOS ANGELES, California

Brief Legal Description W. ORANGE STREET & MONTECITO DRIVE



CORNER TYPE

- Government Corner  Control
- Meander  Property
- Rancho  Other

Date of Survey July 22, 2005

COORDINATES (Optional)

N. \_\_\_\_\_  
 E. \_\_\_\_\_  
 Zone NAD27  NAD83   
 NAD83 Epoch \_\_\_\_\_  
 Elev. \_\_\_\_\_  
 Vert. Datum: NGVD29  NAVD88   
 Meas. Units: Metric  Imperial   
 U.S. Survey foot

Corner — Left as found  Found and tagged  Established  Reestablished  Rebuilt

Identification and type of corner found; Evidence used to identify or procedure used to establish or reestablish the corner:  
SEE PAGE 2.

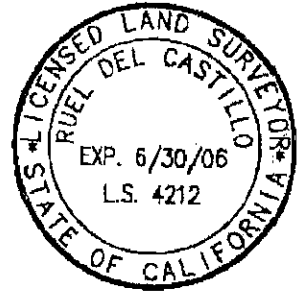
A description of the physical condition of the monument as found and as set or reset: SEE PAGE 2.

SURVEYOR'S STATEMENT

This Corner Record was prepared by me or under my direction in conformance with the Land Surveyor's Act on SEPTEMBER 6, 2005

Signed Ruel del Castillo L.S. or R.C.E. No. 4212

EXP. 6/30/06



COUNTY SURVEYOR'S STATEMENT

This Corner Record was received SEP 14 2005

and examined and filed OCT 12 2005

Signed Curt M. O'Bryan L.S. or R.C.E. No. 6388

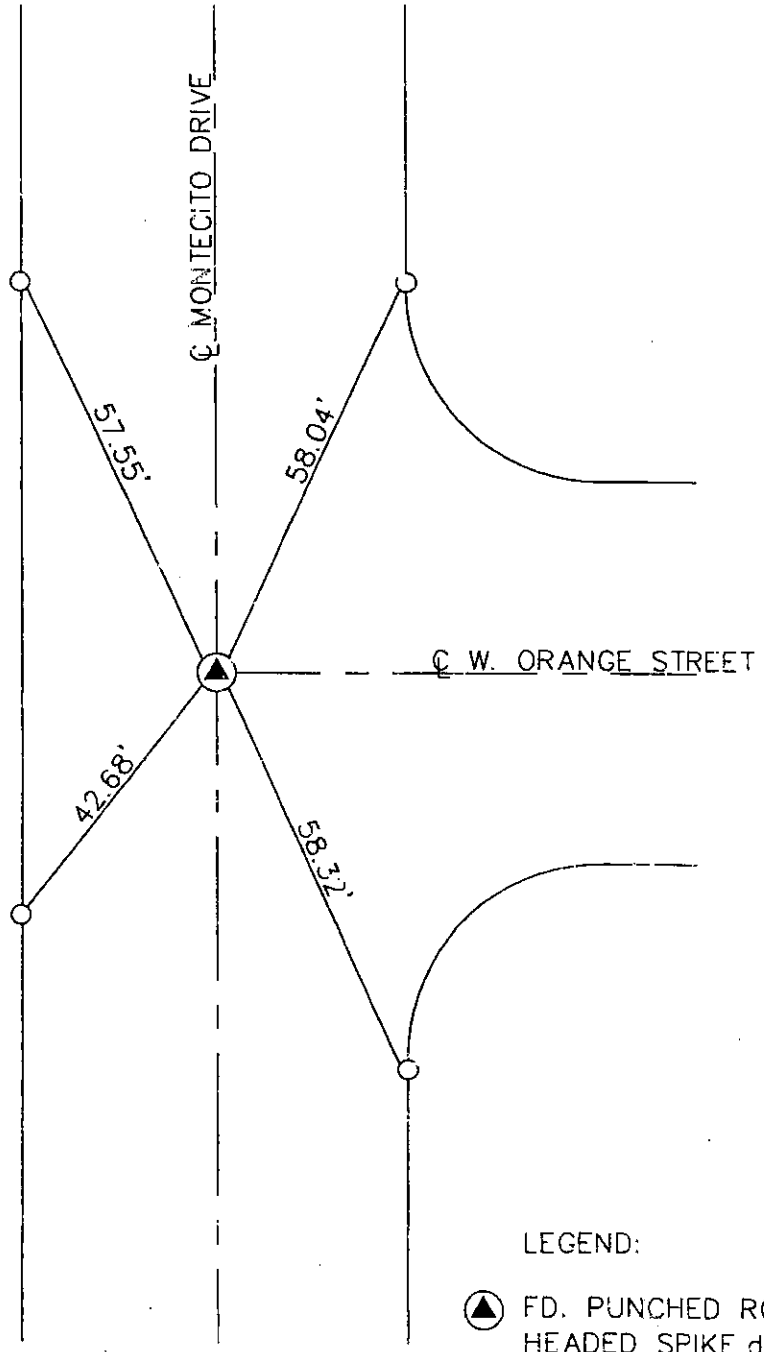
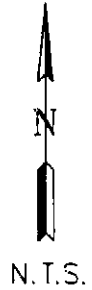
Title DEPUTY COUNTY SURVEYOR



County Surveyor's Comment \_\_\_\_\_

ENG 10-6-5

# W. ORANGE STREET & MONTECITO DRIVE



LEGEND:

- ⊙ FD. PUNCHED ROUND HEADED SPIKE, dn. 0.2', NO REF.
- SET LEAD, TACK & TAG "LS 4212 TIE" IN TC.

NOTE: THESE TIES ARE FOR THE PURPOSE OF PERPETUATING THE FOUND MONUMENTATION. NO CLAIM IS MADE AS TO THE RELATIONSHIP OF THE POINTS OR LINES SHOWN HEREON TO THE TRUE BOUNDARY LOCATIONS.

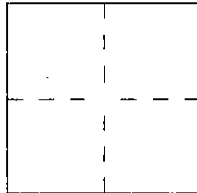
CORNER RECORD

PWFB 1425

Document Number 478

City of SAN GABRIEL County of LOS ANGELES, California

Brief Legal Description MAIN STREET & MONTECITO DRIVE



CORNER TYPE

Government Corner  Control   
Meander  Property   
Rancho  Other   
Date of Survey July 22, 2005

COORDINATES (Optional)

N. \_\_\_\_\_  
E. \_\_\_\_\_  
Zone \_\_\_\_\_ NAD27  NAD83   
NAD83 Epoch \_\_\_\_\_  
Elev. \_\_\_\_\_  
Vert. Datum: NGVD29  NAVD88   
Meas. Units: Metric  Imperial   
U.S. Survey foot

Corner --- Left as found  Found and tagged  Established  Reestablished  Rebuilt

Identification and type of corner found; Evidence used to identify or procedure used to establish or reestablish the corner:  
SEE PAGE 2.

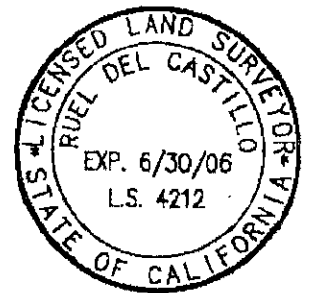
A description of the physical condition of the monument as found and as set or reset: SEE PAGE 2.

SURVEYOR'S STATEMENT

This Corner Record was prepared by me or under my direction in conformance with the Land Surveyor's Act on SEPTEMBER 6, 2005

Signed Ruel del Castillo L.S. or R.C.E. No. 4212

EXP. 6/30/06



COUNTY SURVEYOR'S STATEMENT

This Corner Record was received SEP 14 2005 and examined and filed OCT 12 2005

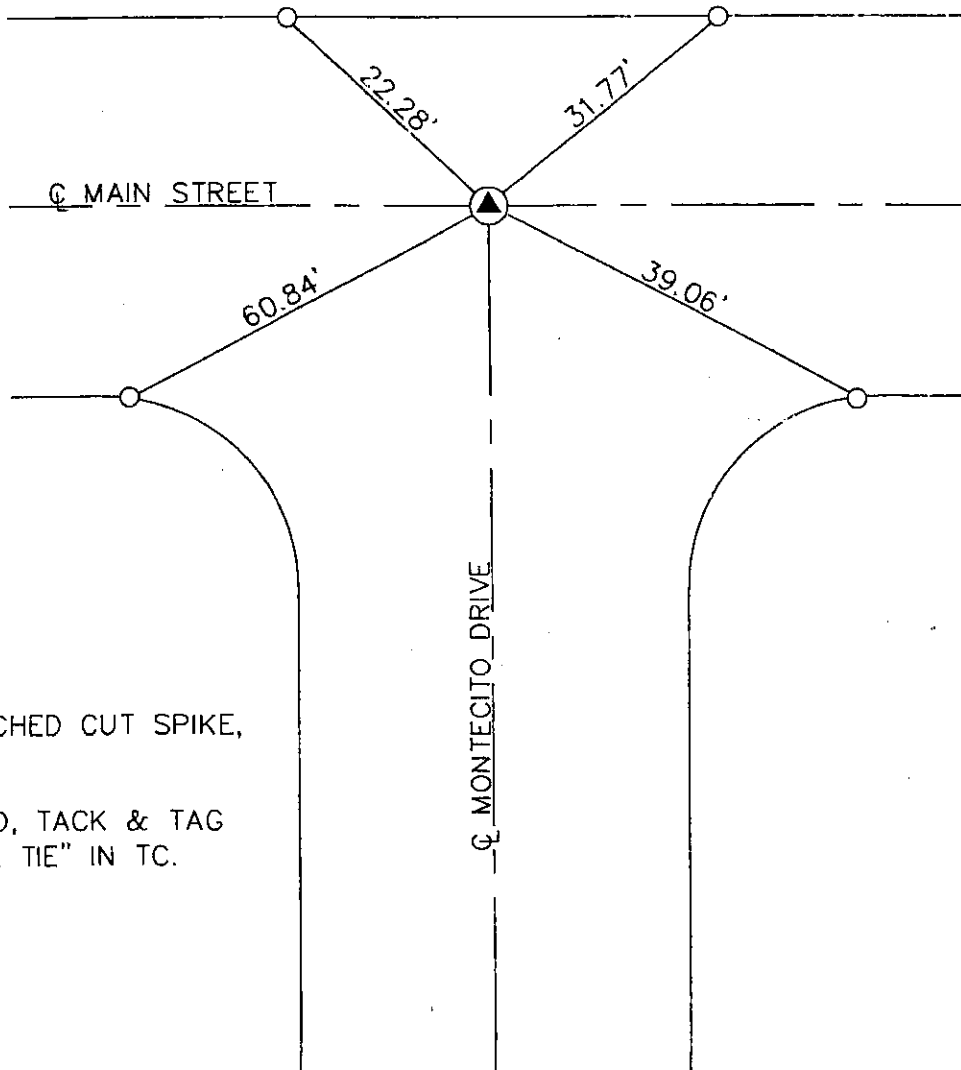
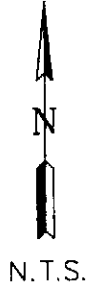
Signed Curt M. O'Bryan L.S. or R.C.E. No. 6388  
Title DEPUTY COUNTY SURVEYOR



County Surveyor's Comment \_\_\_\_\_

*JMG 10-6-5*

# MAIN STREET & MONTECITO DRIVE



LEGEND:

- ▲ FD. PUNCHED CUT SPIKE,  
NO REF.
- SET LEAD, TACK & TAG  
"LS 4212 TIE" IN TC.

NOTE: THESE TIES ARE FOR THE PURPOSE OF PERPETUATING THE FOUND MONUMENTATION. NO CLAIM IS MADE AS TO THE RELATIONSHIP OF THE POINTS OR LINES SHOWN HEREON TO THE TRUE BOUNDARY LOCATIONS.

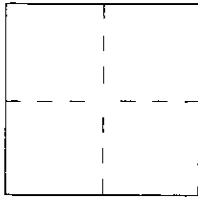


# CORNER RECORD

Document Number

**480**City of SAN GABRIELCounty of LOS ANGELES

California

Brief Legal Description LAFAYETTE STREET & E. WELLS STREET**CORNER TYPE**

Government Corner  Control   
 Meander  Property   
 Rancho  Other   
 Date of Survey July 22, 2005

**COORDINATES (Optional)**

N. \_\_\_\_\_  
 E. \_\_\_\_\_  
 Zone \_\_\_\_\_ NAD27  NAD83   
 NAD83 Epoch \_\_\_\_\_  
 Elev. \_\_\_\_\_  
 Vert. Datum: NGVD29  NAVD88   
 Meas. Units: Metric  Imperial   
 U.S. Survey foot

Corner — Left as found  Found and tagged  Established  Reestablished  Rebuilt

Identification and type of corner found; Evidence used to identify or procedure used to establish or reestablish the corner:  
SEE PAGE 2.

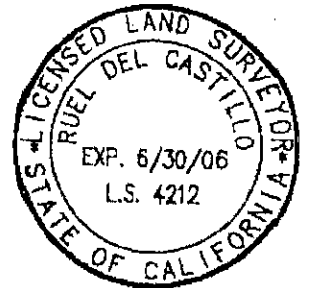
A description of the physical condition of the monument as found and as set or reset: SEE PAGE 2.

**SURVEYOR'S STATEMENT**

This Corner Record was prepared by me or under my direction in conformance with  
 the Land Surveyor's Act on SEPTEMBER 6, 2005

Signed Ruel del Castillo L.S. or R.C.E. No. 4212

EXP. 6/30/06

**COUNTY SURVEYOR'S STATEMENT**

This Corner Record was received SEP 14 2005 OCT 24 2005  
 and examined and filed NOV 03 2005

Signed Curt O'Bryan L.S. or R.C.E. No. 6388

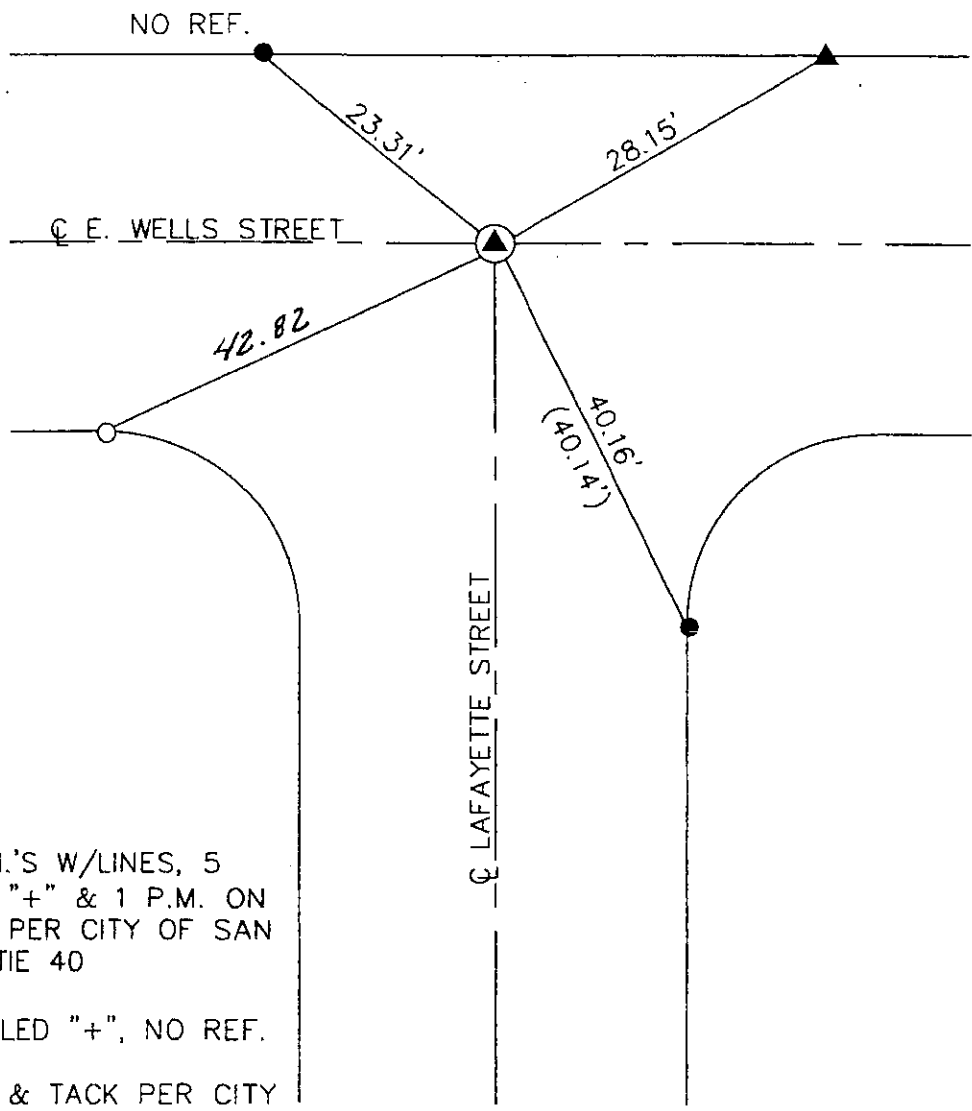
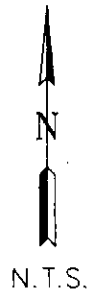
Title DEPUTY COUNTY SURVEYOR



County Surveyor's Comment \_\_\_\_\_

*Em 10-5-05*

LAFAYETTE STREET & E. WELLS STREET



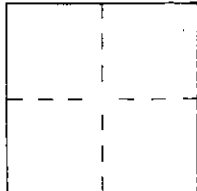
LEGEND:

- ⊙ FD. 2 P.M.'S W/LINES, 5 CHISELED "+" & 1 P.M. ON SMH RIM, PER CITY OF SAN GABRIEL TIE 40
- ▲ FD. CHISELED "+", NO REF.
- FD. LEAD & TACK PER CITY OF SAN GABRIEL TIE 40, UNLESS OTHERWISE NOTED.
- SET LEAD, TACK & TAG "LS 4212 TIE" IN TC.
- ( ) RECORD PER CITY OF SAN GABRIEL TIE 40

NOTE: THESE TIES ARE FOR THE PURPOSE OF PERPETUATING THE FOUND MONUMENTATION. NO CLAIM IS MADE AS TO THE RELATIONSHIP OF THE POINTS OR LINES SHOWN HEREON TO THE TRUE BOUNDARY LOCATIONS.

City of SAN GABRIEL County of LOS ANGELES, California

Brief Legal Description KENMORE DRIVE & S. SAN GABRIEL BOULEVARD



CORNER TYPE

- Government Corner  Control
- Meander  Property
- Rancho  Other

Date of Survey July 22, 2005

COORDINATES (Optional)

N. \_\_\_\_\_  
 E. \_\_\_\_\_  
 Zone \_\_\_\_\_ NAD27  NAD83   
 NAD83 Epoch \_\_\_\_\_  
 Elev. \_\_\_\_\_  
 Vert. Datum: NGVD29  NAVD88   
 Meas. Units: Metric  Imperial   
 U.S. Survey foot

Corner — Left as found  Found and tagged  Established  Reestablished  Rebuilt

Identification and type of corner found; Evidence used to identify or procedure used to establish or reestablish the corner:  
SEE PAGE 2.

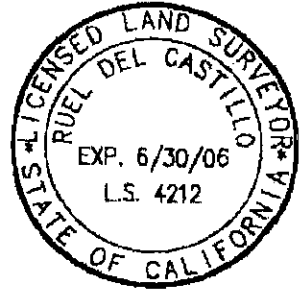
A description of the physical condition of the monument as found and as set or reset: SEE PAGE 2.

SURVEYOR'S STATEMENT

This Corner Record was prepared by me or under my direction in conformance with the Land Surveyor's Act on SEPTEMBER 6, 2005

Signed Ruel del Castillo L.S. or R.C.E. No. 4212

EXP. 6/30/06



COUNTY SURVEYOR'S STATEMENT

This Corner Record was received SEP 14 2005

and examined and filed OCT 12 2005

Signed Curt M. O'Bryan L.S. or R.C.E. No. 6388

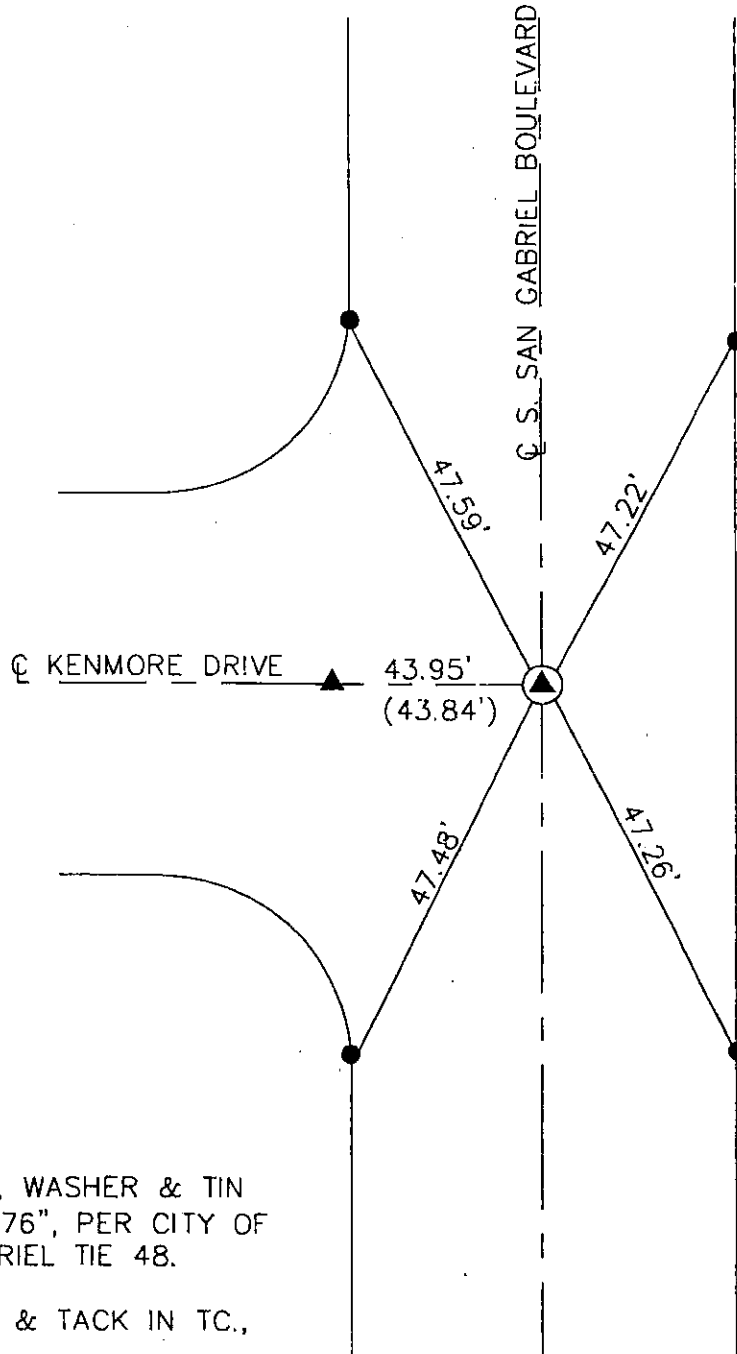
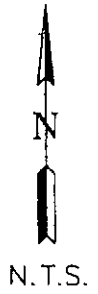
Title DEPUTY COUNTY SURVEYOR

County Surveyor's Comment \_\_\_\_\_



*Smg 10-6-5*

KENMORE DRIVE & S. SAN GABRIEL BOULEVARD



LEGEND:

- ▲ (in circle) FD. BOLT, WASHER & TIN "RCE 10776", PER CITY OF SAN GABRIEL TIE 48.
- FD. LEAD & TACK IN TC., NO REF.
- ▲ FD. PUNCH MARK ON SMH RIM, PER CITY OF SAN GABRIEL TIE 48
- ( ) RECORD PER CITY OF SAN GABRIEL TIE 48

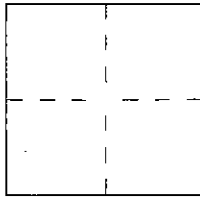
NOTE: THESE TIES ARE FOR THE PURPOSE OF PERPETUATING THE FOUND MONUMENTATION. NO CLAIM IS MADE AS TO THE RELATIONSHIP OF THE POINTS OR LINES SHOWN HEREON TO THE TRUE BOUNDARY LOCATIONS.

CORNER RECORD <sup>PWFB</sup> 1426

Document Number 3186

City of SAN GABRIEL County of LOS ANGELES, California

Brief Legal Description E. WELLS STREET & S. PINE STREET



CORNER TYPE

- Government Corner  Control
- Meander  Property
- Rancho  Other

Date of Survey July 22, 2005

COORDINATES (Optional)

N. \_\_\_\_\_  
 E. \_\_\_\_\_  
 Zone \_\_\_\_\_ NAD27  NAD83   
 NAD83 Epoch \_\_\_\_\_  
 Elev. \_\_\_\_\_  
 Vert. Datum: NGVD29  NAVD88   
 Meas. Units: Metric  Imperial   
 U.S. Survey foot

Corner  Left as found  Found and tagged  Established  Reestablished  Rebuilt

Identification and type of corner found; Evidence used to identify or procedure used to establish or reestablish the corner:  
SEE PAGE 2.

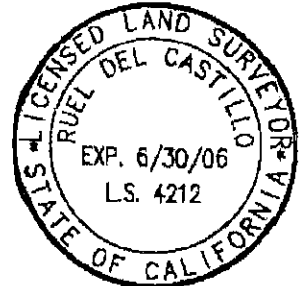
A description of the physical condition of the monument as found and as set or reset: SEE PAGE 2.

SURVEYOR'S STATEMENT

This Corner Record was prepared by me or under my direction in conformance with the Land Surveyor's Act on SEPTEMBER 6, 2005

Signed Ruel del Castillo L.S. or R.C.E. No. 4212

EXP. 6/30/06



COUNTY SURVEYOR'S STATEMENT

This Corner Record was received SEP 14 2005

and examined and filed OCT 12 2005

Signed Curt M. O'Bryan L.S. or R.C.E. No. 6388

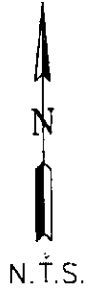
Title DEPUTY COUNTY SURVEYOR



County Surveyor's Comment \_\_\_\_\_

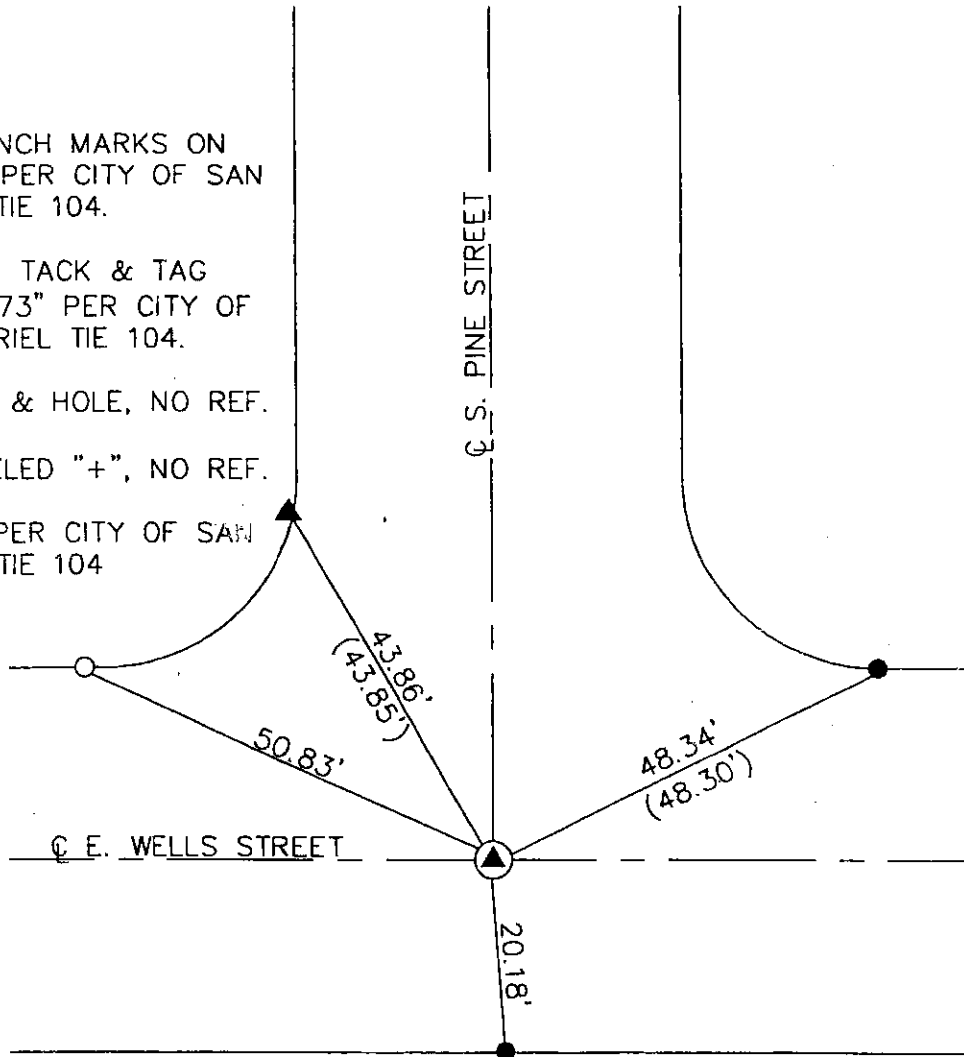
*SMG 10-6-5*

E. WELLS STREET & S. PINE STREET



LEGEND:

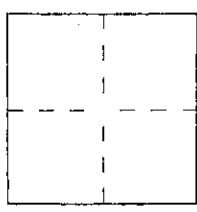
- ⊙ FD. 4 PUNCH MARKS ON SMH RIM PER CITY OF SAN GABRIEL TIE 104.
- ▲ FD. LEAD, TACK & TAG "RCE 15873" PER CITY OF SAN GABRIEL TIE 104.
- FD. LEAD & HOLE, NO REF.
- FD. CHISELED "+", NO REF.
- ( ) RECORD PER CITY OF SAN GABRIEL TIE 104



NOTE: THESE TIES ARE FOR THE PURPOSE OF PERPETUATING THE FOUND MONUMENTATION. NO CLAIM IS MADE AS TO THE RELATIONSHIP OF THE POINTS OR LINES SHOWN HEREON TO THE TRUE BOUNDARY LOCATIONS.

City of SAN GABRIEL County of LOS ANGELES, California

Brief Legal Description S. SAN GABRIEL BOULEVARD & E. WELLS STREET



CORNER TYPE
Government Corner [ ] Control [ ]
Meander [ ] Property [ ]
Rancho [ ] Other [x]
Date of Survey July 22, 2005

COORDINATES (Optional)
N.
E.
Zone NAD27 [ ] NAD83 [ ]
NAD83 Epoch
Elev.
Vert. Datum: NGVD29 [ ] NAVD88 [ ]
Meas. Units: Metric [ ] Imperial [ ]
U.S. Survey foot [ ]

Corner — Left as found [x] Found and tagged [ ] Established [ ] Reestablished [ ] Rebuilt [ ]

Identification and type of corner found; Evidence used to identify or procedure used to establish or reestablish the corner.
SEE PAGE 2.

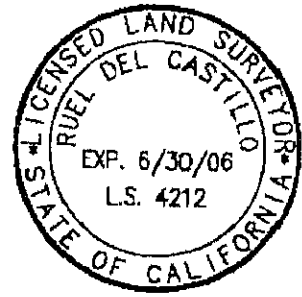
A description of the physical condition of the monument as found and as set or reset: SEE PAGE 2.

SURVEYOR'S STATEMENT

This Corner Record was prepared by me or under my direction in conformance with the Land Surveyor's Act on SEPTEMBER 6, 2005

Signed Ruel del Castillo L.S. or R.C.E. No. 4212

EXP. 6/30/06



COUNTY SURVEYOR'S STATEMENT

This Corner Record was received SEP 14 2005

and examined and filed OCT 12 2005

Signed Curt M. O'Bryan L.S. or R.C.E. No. 6388

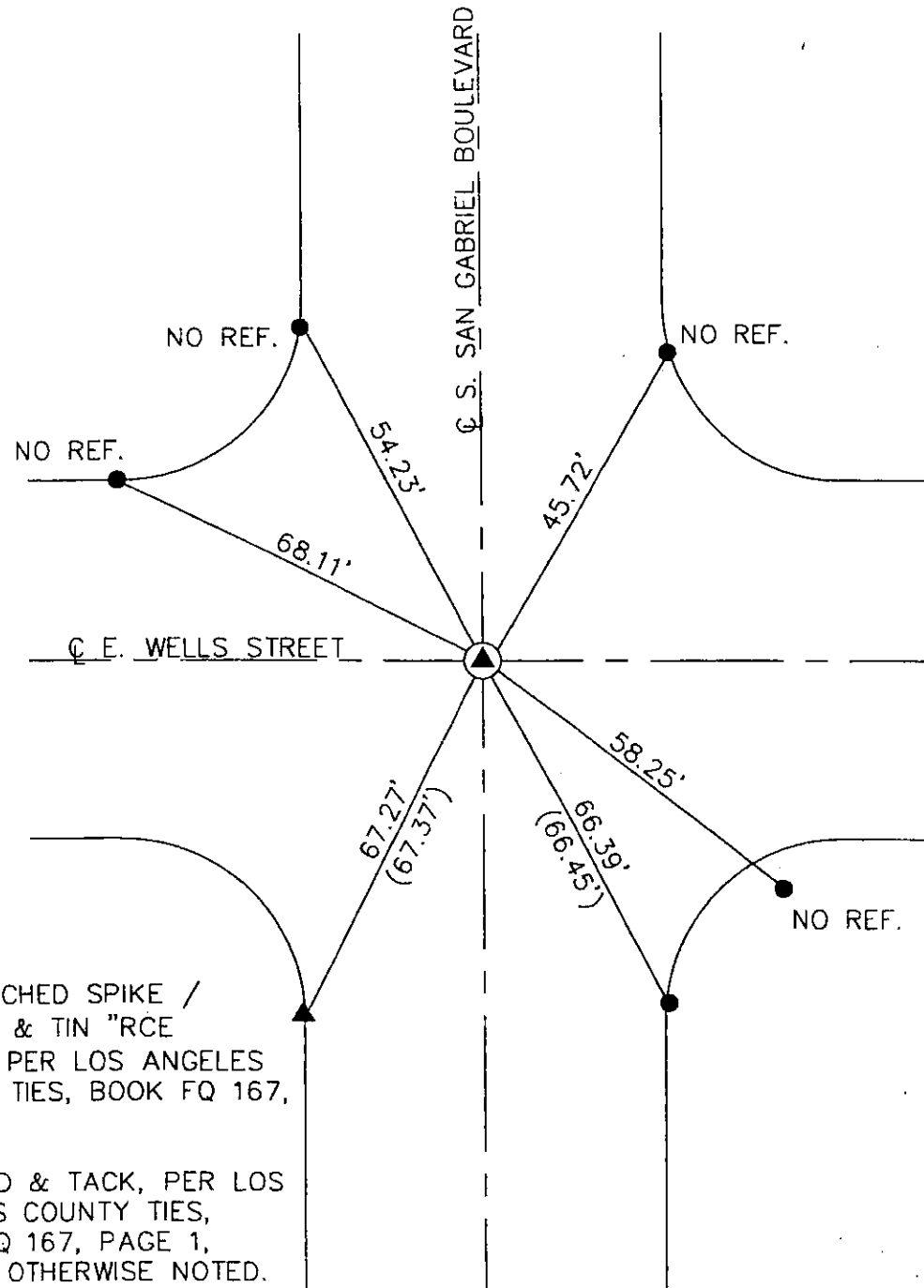
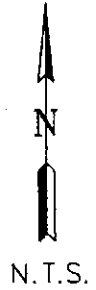
Title DEPUTY COUNTY SURVEYOR



County Surveyor's Comment

5/16 10-6-5

S. SAN GABRIEL BOULEVARD & E. WELLS STREET



LEGEND:

- ▲ FD. PUNCHED SPIKE / WASHER & TIN "RCE 10776", PER LOS ANGELES COUNTY TIES, BOOK FQ 167, PAGE 1.
- FD. LEAD & TACK, PER LOS ANGELES COUNTY TIES, BOOK FQ 167, PAGE 1, UNLESS OTHERWISE NOTED.
- ▲ FD. LEAD & SPIKE, PER LOS ANGELES COUNTY TIES, BOOK FQ 167, PAGE 1.
- ( ) RECORD PER LOS ANGELES COUNTY TIES, BOOK FQ 167, PAGE 1.

NOTE: THESE TIES ARE FOR THE PURPOSE OF PERPETUATING THE FOUND MONUMENTATION. NO CLAIM IS MADE AS TO THE RELATIONSHIP OF THE POINTS OR LINES SHOWN HEREON TO THE TRUE BOUNDARY LOCATIONS.



CORNER RECORD PWFB 1426

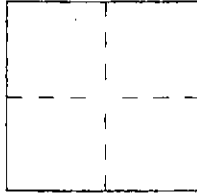
3190

City of SAN GABRIEL

Document Number \_\_\_\_\_  
County of LOS ANGELES

California

Brief Legal Description S. SAN GABRIEL BOULEVARD & E. CHESTNUT AVENUE



CORNER TYPE

- Government Corner  Control
- Meander  Property
- Rancho  Other

Date of Survey July 22, 2005

COORDINATES (Optional)

N. \_\_\_\_\_  
 E. \_\_\_\_\_  
 Zone \_\_\_\_\_ NAD27  NAD83   
 NAD83 Epoch \_\_\_\_\_  
 Elev. \_\_\_\_\_  
 Vert. Datum: NGVD29  NAVD88   
 Meas. Units: Metric  Imperial   
 U.S. Survey foot

Corner — Left as found  Found and tagged  Established  Reestablished  Rebuilt

Identification and type of corner found; Evidence used to identify or procedure used to establish or reestablish the corner:  
SEE PAGE 2.

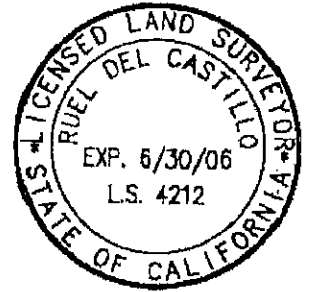
A description of the physical condition of the monument as found and as set or reset: SEE PAGE 2.

SURVEYOR'S STATEMENT

This Corner Record was prepared by me or under my direction in conformance with the Land Surveyor's Act on SEPTEMBER 6, 2005

Signed Ruel del Castillo L.S. or R.C.E. No. 4212

EXP. 6/30/06



COUNTY SURVEYOR'S STATEMENT

This Corner Record was received SEP 14 2005 and examined and filed OCT 12 2005

Signed Curt M. O'Bryan L.S. or R.C.E. No. 6388

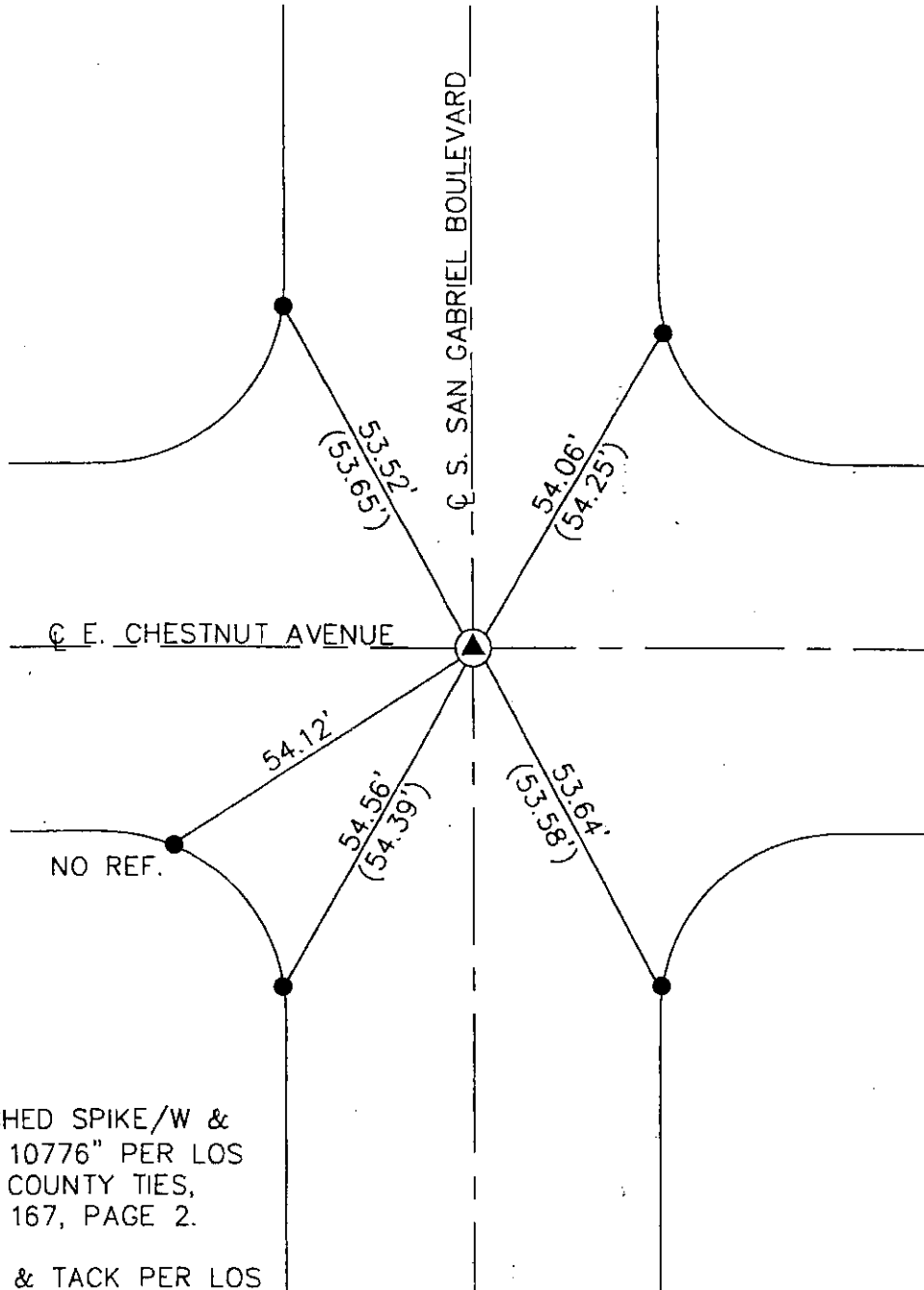
Title DEPUTY COUNTY SURVEYOR



County Surveyor's Comment \_\_\_\_\_

*Smg 10-6-5*

S. SAN GABRIEL BOULEVARD & E. CHESTNUT AVENUE



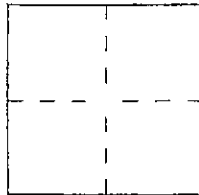
LEGEND:

- ▲ FD. PUNCHED SPIKE/W & TIN "RCE 10776" PER LOS ANGELES COUNTY TIES, BOOK FQ 167, PAGE 2.
- FD. LEAD & TACK PER LOS ANGELES COUNTY TIES, BOOK FQ 167, PAGE 2, UNLESS OTHERWISE NOTED.
- ) RECORD PER LOS ANGELES COUNTY TIES, BOOK FQ 167, PAGE 2.

NOTE: THESE TIES ARE FOR THE PURPOSE OF PERPETUATING THE FOUND MONUMENTATION. NO CLAIM IS MADE AS TO THE RELATIONSHIP OF THE POINTS OR LINES SHOWN HEREON TO THE TRUE BOUNDARY LOCATIONS.

City of SAN GABRIEL County of LOS ANGELES, California

Brief Legal Description S. PINE STREET & E. CHESTNUT AVENUE



CORNER TYPE

- Government Corner  Control
- Meander  Property
- Rancho  Other

Date of Survey July 22, 2005

COORDINATES (Optional)

N. \_\_\_\_\_  
 E. \_\_\_\_\_  
 Zone \_\_\_\_\_ NAD27  NAD83   
 NAD83 Epoch \_\_\_\_\_  
 Elev. \_\_\_\_\_  
 Vert. Datum: NGVD29  NAVD88   
 Meas. Units: Metric  Imperial   
 U.S. Survey foot

Corner — Left as found  Found and tagged  Established  Reestablished  Rebuilt

Identification and type of corner found; Evidence used to identify or procedure used to establish or reestablish the corner:  
SEE PAGE 2.

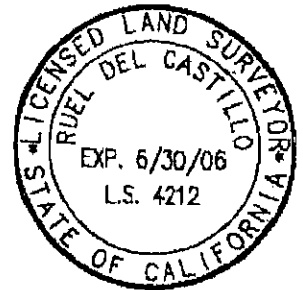
A description of the physical condition of the monument as found and as set or reset: SEE PAGE 2.

SURVEYOR'S STATEMENT

This Corner Record was prepared by me or under my direction in conformance with the Land Surveyor's Act on SEPTEMBER 6, 2005

Signed Ruel del Castillo L.S. or R.C.E. No. 4212

EXP. 6/30/06



COUNTY SURVEYOR'S STATEMENT

This Corner Record was received SEP 14 2005  
and examined and filed OCT 12 2005

Signed Curt M. O'Bryan L.S. or R.C.E. No. 6388

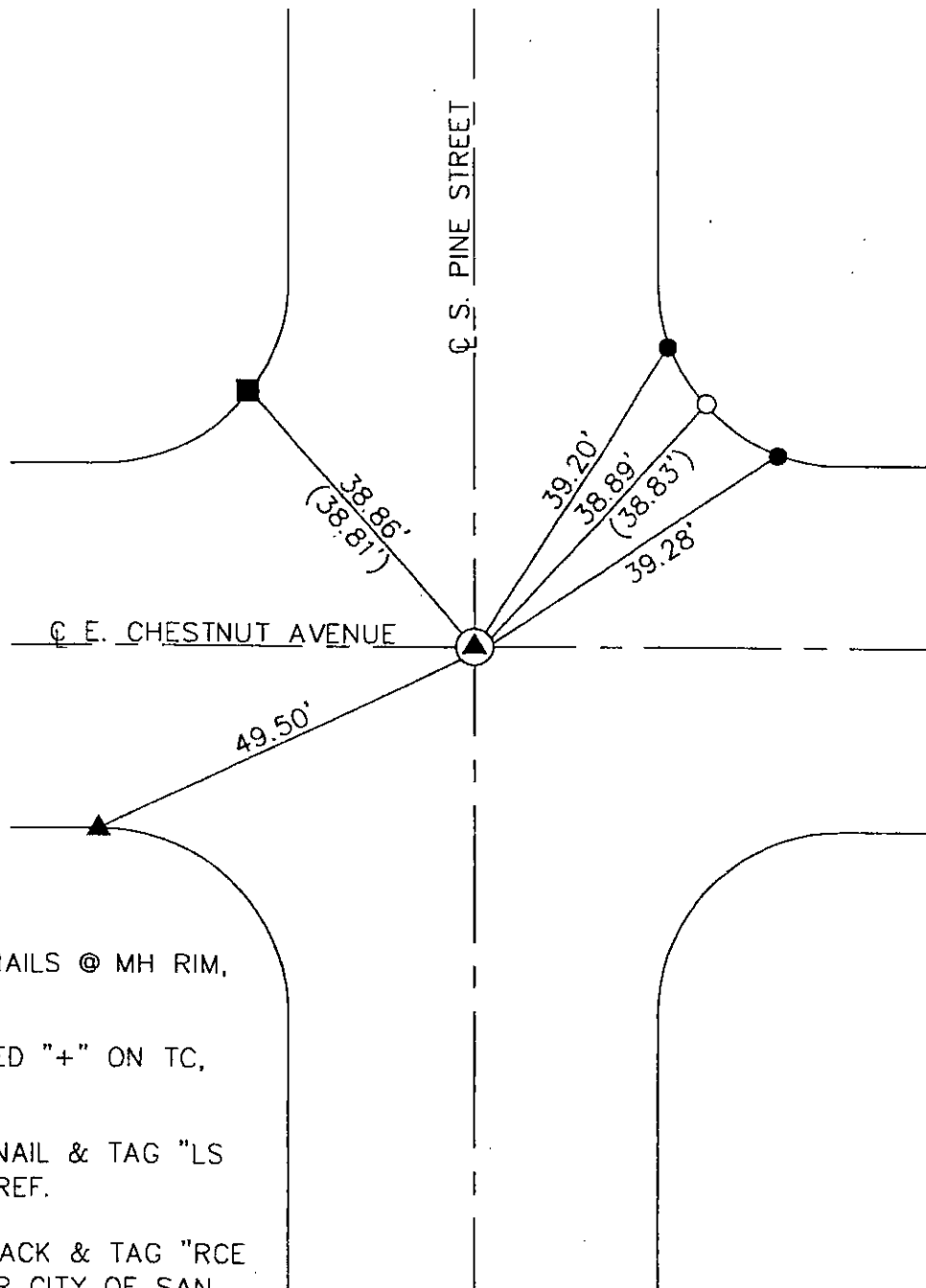
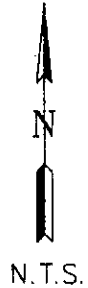
Title DEPUTY COUNTY SURVEYOR



County Surveyor's Comment \_\_\_\_\_

File 10-6-5

S. PINE STREET & E. CHESTNUT AVENUE



LEGEND:

- ⊙ FD. 4 PK NAILS @ MH RIM, NO REF.
- ▲ FD. CHISELED "+" ON TC, NO REF.
- FD. LEAD, NAIL & TAG "LS 2311", NO REF.
- FD. LEAD TACK & TAG "RCE 15873", PER CITY OF SAN GABRIEL TIE 104.
- FD. LEAD & TACK IN TC PER CITY OF SAN GABRIEL TIE 104.
- ( ) RECORD PER CITY OF SAN GABRIEL TIE 104

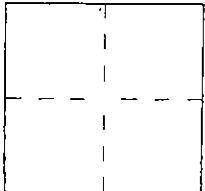
NOTE: THESE TIES ARE FOR THE PURPOSE OF PERPETUATING THE FOUND MONUMENTATION. NO CLAIM IS MADE AS TO THE RELATIONSHIP OF THE POINTS OR LINES SHOWN HEREON TO THE TRUE BOUNDARY LOCATIONS.

# CORNER RECORD <sup>PWFB</sup> 1425

Document Number 430

City of SAN GABRIEL County of LOS ANGELES, California

Brief Legal Description E. VALLEY BOULEVARD & S. EUCLID AVENUE



### CORNER TYPE

- Government Corner  Control
- Meander  Property
- Rancho  Other

Date of Survey July 22, 2005

### COORDINATES (Optional)

N. \_\_\_\_\_  
 E. \_\_\_\_\_  
 Zone \_\_\_\_\_ NAD27  NAD83   
 NAD83 Epoch \_\_\_\_\_  
 Elev. \_\_\_\_\_  
 Vert. Datum: NGVD29  NAVD88   
 Meas. Units: Metric  Imperial   
 U.S. Survey foot

Corner — Left as found  Found and tagged  Established  Reestablished  Rebuilt

Identification and type of corner found; Evidence used to identify or procedure used to establish or reestablish the corner:  
SEE PAGE 2.

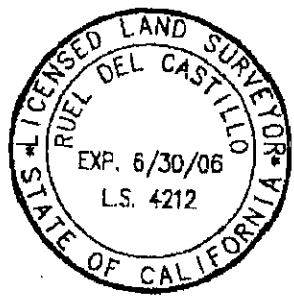
A description of the physical condition of the monument as found and as set or reset: SEE PAGE 2.

### SURVEYOR'S STATEMENT

This Corner Record was prepared by me or under my direction in conformance with the Land Surveyor's Act on SEPTEMBER 6, 2005

Signed Ruel del Castillo L.S. or R.C.E. No. 4212

EXP. 6/30/06



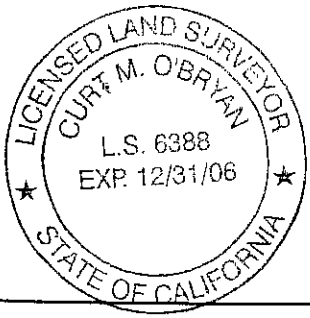
### COUNTY SURVEYOR'S STATEMENT

This Corner Record was received SEP 14 2005

and examined and filed OCT 12 2005

Signed Curt M. O'Bryan L.S. or R.C.E. No. 6388

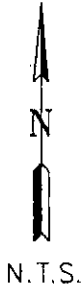
Title DEPUTY COUNTY SURVEYOR



County Surveyor's Comment \_\_\_\_\_

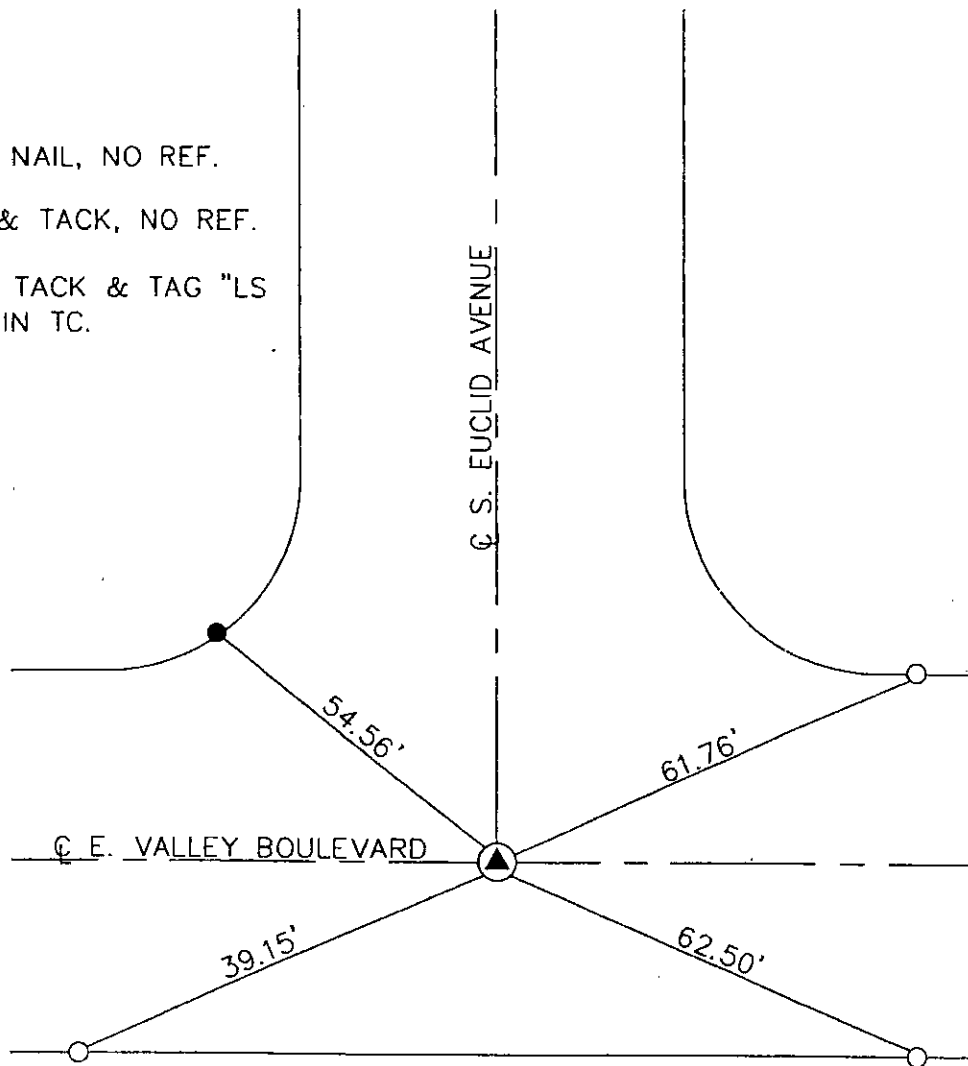
File 10-6-5

E. VALLEY BOULEVARD & S. EUCLID AVENUE



LEGEND:

- ▲ FD. CONC. NAIL, NO REF.
- FD. LEAD & TACK, NO REF.
- SET LEAD, TACK & TAG "LS 4212 TIE" IN TC.



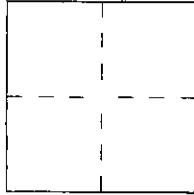
NOTE: THESE TIES ARE FOR THE PURPOSE OF PERPETUATING THE FOUND MONUMENTATION. NO CLAIM IS MADE AS TO THE RELATIONSHIP OF THE POINTS OR LINES SHOWN HEREON TO THE TRUE BOUNDARY LOCATIONS.

CORNER RECORD <sup>PWFB</sup> 1425

Document Number 432

City of SAN GABRIEL County of LOS ANGELES, California

Brief Legal Description E. VALLEY BOULEVARD & LAFAYETTE STREET



CORNER TYPE

- Government Corner  Control
- Meander  Property
- Rancho  Other

Date of Survey July 22, 2005

COORDINATES (Optional)

N. \_\_\_\_\_  
 E. \_\_\_\_\_  
 Zone \_\_\_\_\_ NAD27  NAD83   
 NAD83 Epoch \_\_\_\_\_  
 Elev. \_\_\_\_\_  
 Vert. Datum: NGVD29  NAVD88   
 Meas. Units: Metric  Imperial   
 U.S. Survey foot

Corner — Left as found  Found and tagged  Established  Reestablished  Rebuilt

Identification and type of corner found; Evidence used to identify or procedure used to establish or reestablish the corner:  
SEE PAGE 2.

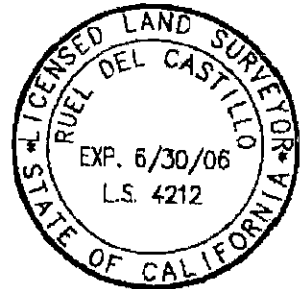
A description of the physical condition of the monument as found and as set or reset: SEE PAGE 2.

SURVEYOR'S STATEMENT

This Corner Record was prepared by me or under my direction in conformance with the Land Surveyor's Act on SEPTEMBER 6, 2005

Signed Ruel del Castillo L.S. or R.C.E. No. 4212

EXP. 6/30/06



COUNTY SURVEYOR'S STATEMENT

This Corner Record was received SEP 14 2005

and examined and filed OCT 12 2005

Signed Curt M. O'Bryan L.S. or R.C.E. No. 6388

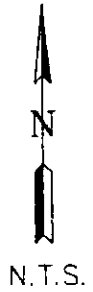
Title DEPUTY COUNTY SURVEYOR

County Surveyor's Comment \_\_\_\_\_



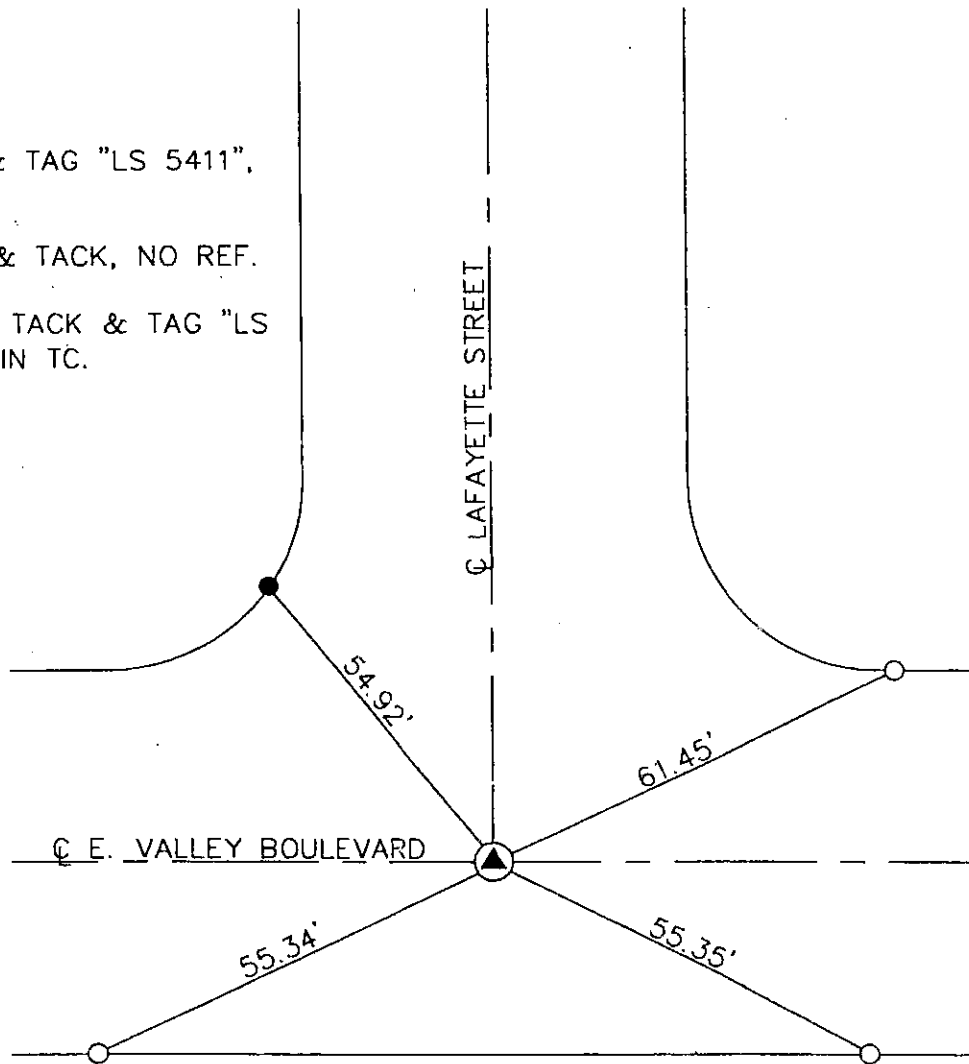
*SMG 10-6-5*

E. VALLEY BOULEVARD & LAFAYETTE STREET



LEGEND:

- ▲ FD. NAIL & TAG "LS 5411", NO REF.
- FD. LEAD & TACK, NO REF.
- SET LEAD, TACK & TAG "LS 4212 TIE" IN TC.



NOTE: THESE TIES ARE FOR THE PURPOSE OF PERPETUATING THE FOUND MONUMENTATION. NO CLAIM IS MADE AS TO THE RELATIONSHIP OF THE POINTS OR LINES SHOWN HEREON TO THE TRUE BOUNDARY LOCATIONS.



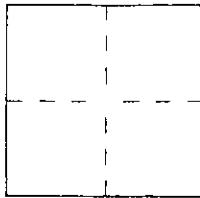
CORNER RECORD <sup>PWFB</sup> 1425

Document Number 434

City of SAN GABRIEL

County of LOS ANGELES, California

Brief Legal Description E. VALLEY BOULEVARD & WALNUT STREET



CORNER TYPE

- Government Corner  Control
- Meander  Property
- Rancho  Other

Date of Survey July 22, 2005

COORDINATES (Optional)

N. \_\_\_\_\_  
 E. \_\_\_\_\_  
 Zone \_\_\_\_\_ NAD27  NAD83   
 NAD83 Epoch \_\_\_\_\_  
 Elev. \_\_\_\_\_  
 Vert. Datum: NGVD29  NAVD88   
 Meas. Units: Metric  Imperial   
 U.S. Survey foot

Corner — Left as found  Found and tagged  Established  Reestablished  Rebuilt

Identification and type of corner found; Evidence used to identify or procedure used to establish or reestablish the corner:  
SEE PAGE 2.

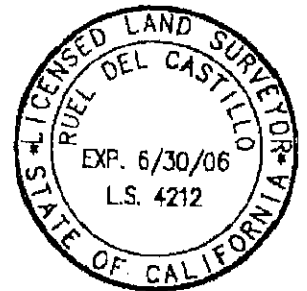
A description of the physical condition of the monument as found and as set or reset: SEE PAGE 2.

SURVEYOR'S STATEMENT

This Corner Record was prepared by me or under my direction in conformance with the Land Surveyor's Act on SEPTEMBER 6, 2005

Signed Ruel del Castillo L.S. or R.C.E. No. 4212

EXP. 6/30/06



COUNTY SURVEYOR'S STATEMENT

This Corner Record was received SEP 14 2005

and examined and filed OCT 12 2005

Signed Curt M. O'Bryan L.S. or R.C.E. No. 6388

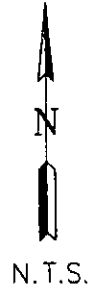
Title DEPUTY COUNTY SURVEYOR



County Surveyor's Comment \_\_\_\_\_

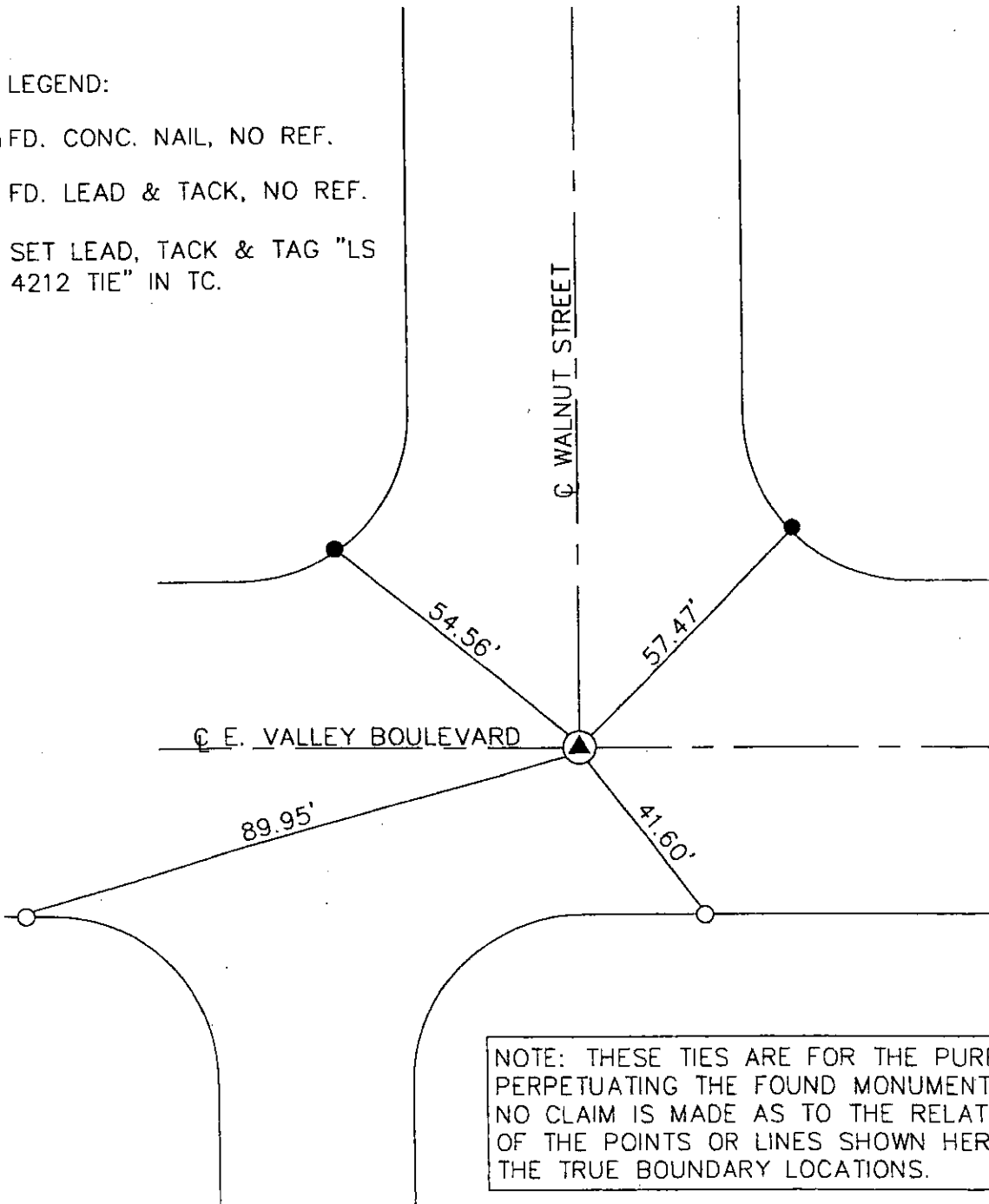
5mg 10-6-5

E. VALLEY BOULEVARD & WALNUT STREET



LEGEND:

- ▲ FD. CONC. NAIL, NO REF.
- FD. LEAD & TACK, NO REF.
- SET LEAD, TACK & TAG "LS 4212 TIE" IN TC.



NOTE: THESE TIES ARE FOR THE PURPOSE OF PERPETUATING THE FOUND MONUMENTATION. NO CLAIM IS MADE AS TO THE RELATIONSHIP OF THE POINTS OR LINES SHOWN HEREON TO THE TRUE BOUNDARY LOCATIONS.

CORNER RECORD

Document Number 436

City of SAN GABRIEL County of LOS ANGELES, California

Brief Legal Description S. DEL MAR AVENUE & E. NEWBY AVENUE



CORNER TYPE

Government Corner  Control   
Meander  Property   
Rancho  Other   
Date of Survey July 22, 2005

COORDINATES (Optional)

N. \_\_\_\_\_  
E. \_\_\_\_\_  
Zone \_\_\_\_\_ NAD27  NAD83   
NAD83 Epoch \_\_\_\_\_  
Elev. \_\_\_\_\_  
Vert. Datum: NGVD29  NAVD88   
Meas. Units: Metric  Imperial   
U.S. Survey foot

Corner — Left as found  Found and tagged  Established  Reestablished  Rebuilt

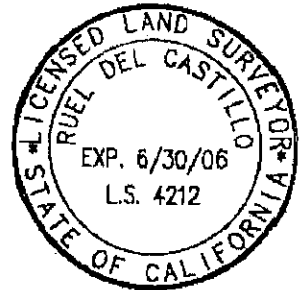
Identification and type of corner found; Evidence used to identify or procedure used to establish or reestablish the corner:  
SEE PAGE 2.

A description of the physical condition of the monument as found and as set or reset: SEE PAGE 2.

SURVEYOR'S STATEMENT

This Corner Record was prepared by me or under my direction in conformance with the Land Surveyor's Act on SEPTEMBER 6, 2005

Signed Ruel del Castillo L.S. or R.C.E. No. 4212  
EXP. 6/30/06



COUNTY SURVEYOR'S STATEMENT

This Corner Record was received SEP 14 2005

and examined and filed OCT 12 2005

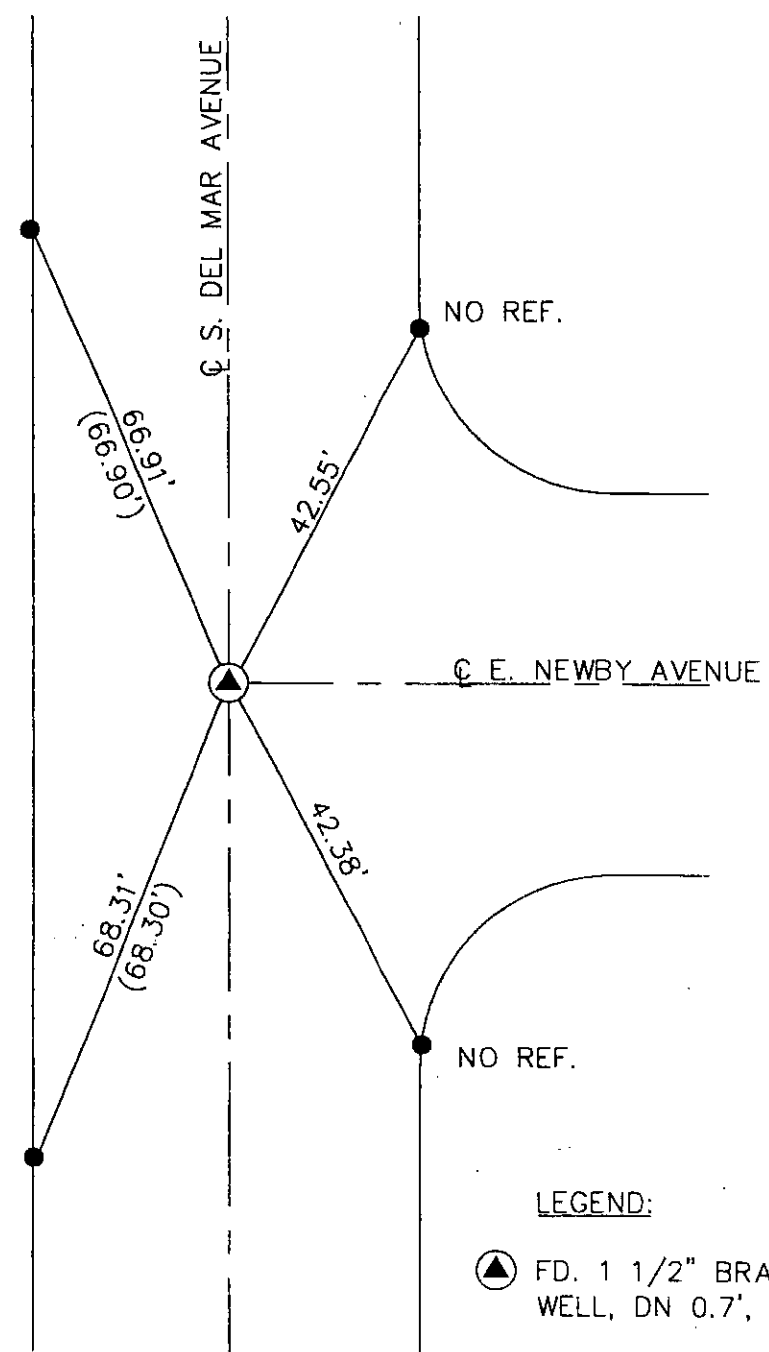
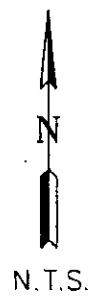
Signed Curt O'Bryan L.S. or R.C.E. No. 6388  
Title DEPUTY COUNTY SURVEYOR



County Surveyor's Comment \_\_\_\_\_

JMG 10-6-5

S. DEL MAR AVENUE & E. NEWBY AVENUE



NOTE: THESE TIES ARE FOR THE PURPOSE OF PERPETUATING THE FOUND MONUMENTATION. NO CLAIM IS MADE AS TO THE RELATIONSHIP OF THE POINTS OR LINES SHOWN HEREON TO THE TRUE BOUNDARY LOCATIONS.

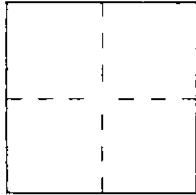
- LEGEND:**
- ⊙ FD. 1 1/2" BRASS CAP IN WELL, DN 0.7', NO REF.
  - FD. LEAD & TACK IN TC, PER CITY OF SAN GABRIEL TIE 50, UNLESS OTHERWISE NOTED.
  - ( ) RECORD PER CITY OF SAN GABRIEL TIE 50

# CORNER RECORD

Document Number 438

City of SAN GABRIEL County of LOS ANGELES, California

Brief Legal Description PALM AVENUE & E. NEWBY AVENUE



### CORNER TYPE

- Government Corner  Control
- Meander  Property
- Rancho  Other

Date of Survey July 22, 2005

### COORDINATES (Optional)

N. \_\_\_\_\_  
 E. \_\_\_\_\_  
 Zone \_\_\_\_\_ NAD27  NAD83   
 NAD83 Epoch \_\_\_\_\_  
 Elev. \_\_\_\_\_  
 Vert. Datum: NGVD29  NAVD88   
 Meas. Units: Metric  Imperial   
 U.S. Survey foot

Corner — Left as found  Found and tagged  Established  Reestablished  Rebuilt

Identification and type of corner found; Evidence used to identify or procedure used to establish or reestablish the corner:  
SEE PAGE 2.

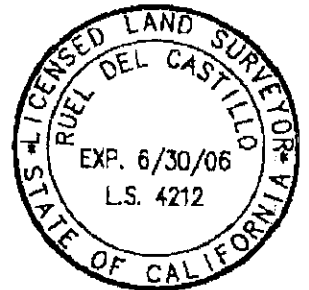
A description of the physical condition of the monument as found and as set or reset: SEE PAGE 2.

### SURVEYOR'S STATEMENT

This Corner Record was prepared by me or under my direction in conformance with the Land Surveyor's Act on SEPTEMBER 6, 2005

Signed Ruel del Castillo L.S. or R.C.E. No. 4212

EXP. 6/30/06



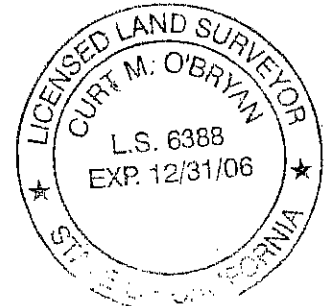
### COUNTY SURVEYOR'S STATEMENT

This Corner Record was received SEP 14 2005

and examined and filed OCT 12 2005

Signed Curt M. O'Bryan L.S. or R.C.E. No. 6388

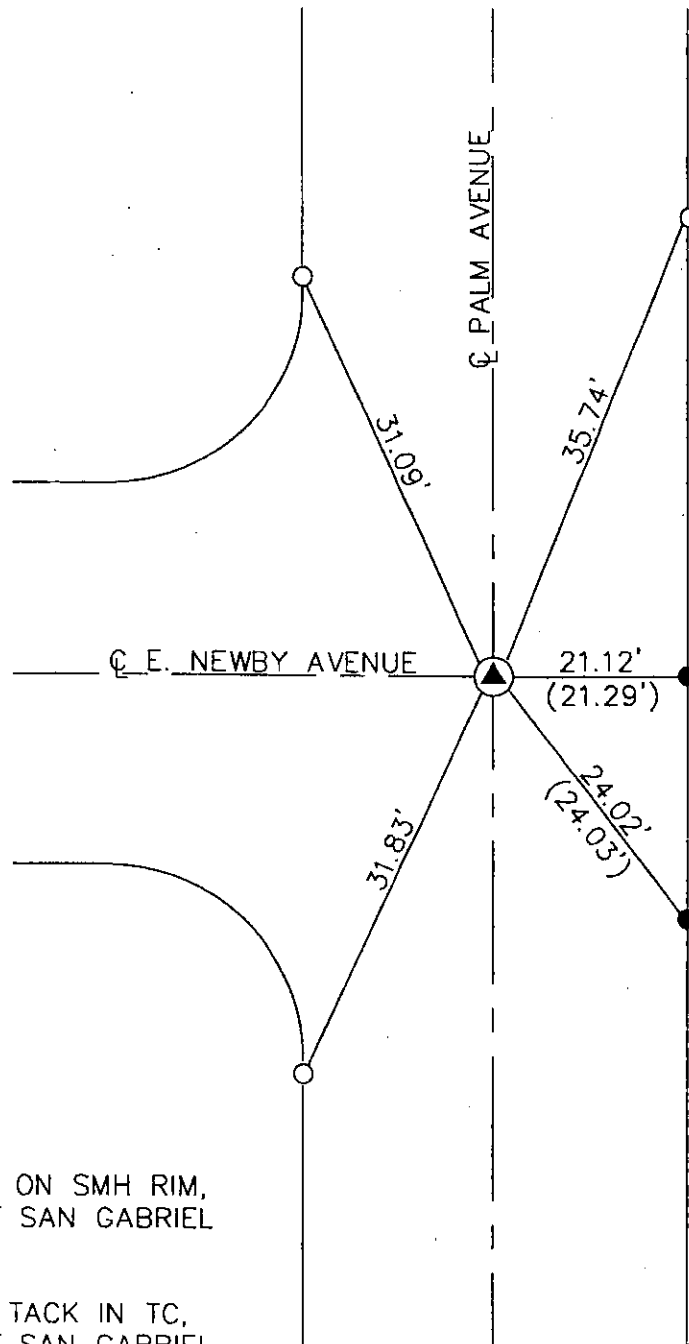
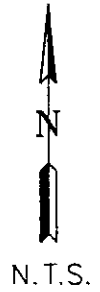
Title DEPUTY COUNTY SURVEYOR






County Surveyor's Comment \_\_\_\_\_

*Sm6 10-6-5*

PALM AVENUE & E. NEWBY AVENUE



LEGEND:

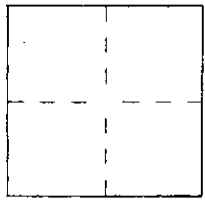
- 
 FD. 4 P.M.'S ON SMH RIM, PER CITY OF SAN GABRIEL TIE 50.
- 
 FD. LEAD & TACK IN TC, PER CITY OF SAN GABRIEL TIE 50.
- 
 SET LEAD, TACK & TAG "LS 4212 TIE" IN TC.
- ( ) RECORD PER CITY OF SAN GABRIEL TIE 50

NOTE: THESE TIES ARE FOR THE PURPOSE OF PERPETUATING THE FOUND MONUMENTATION. NO CLAIM IS MADE AS TO THE RELATIONSHIP OF THE POINTS OR LINES SHOWN HEREON TO THE TRUE BOUNDARY LOCATIONS.

CORNER RECORD **PWFB 1425** Document Number **440**

City of SAN GABRIEL County of LOS ANGELES, California

Brief Legal Description S. EUCLID AVENUE & E. NEWBY AVENUE



**CORNER TYPE**  
Government Corner  Control   
Meander  Property   
Rancho  Other

Date of Survey July 22, 2005

**COORDINATES (Optional)**  
N. \_\_\_\_\_  
E. \_\_\_\_\_  
Zone \_\_\_\_\_ NAD27  NAD83   
NAD83 Epoch \_\_\_\_\_  
Elev. \_\_\_\_\_  
Vert. Datum: NGVD29  NAVD88   
Meas. Units: Metric  Imperial   
U.S. Survey foot

Corner — Left as found  Found and tagged  Established  Reestablished  Rebuilt

Identification and type of corner found; Evidence used to identify or procedure used to establish or reestablish the corner:  
SEE PAGE 2.

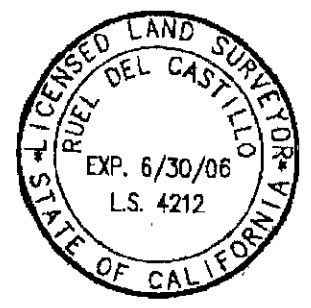
A description of the physical condition of the monument as found and as set or reset: SEE PAGE 2.

**SURVEYOR'S STATEMENT**

This Corner Record was prepared by me or under my direction in conformance with the Land Surveyor's Act on SEPTEMBER 6, 2005

Signed Ruel del Castillo L.S. or R.C.E. No. 4212

EXP. 6/30/06



**COUNTY SURVEYOR'S STATEMENT**

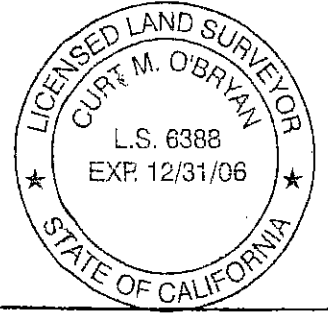
This Corner Record was received SEP 14 2005

and examined and filed OCT 12 2005

Signed Curt M. O'Bryan L.S. or R.C.E. No. 6388

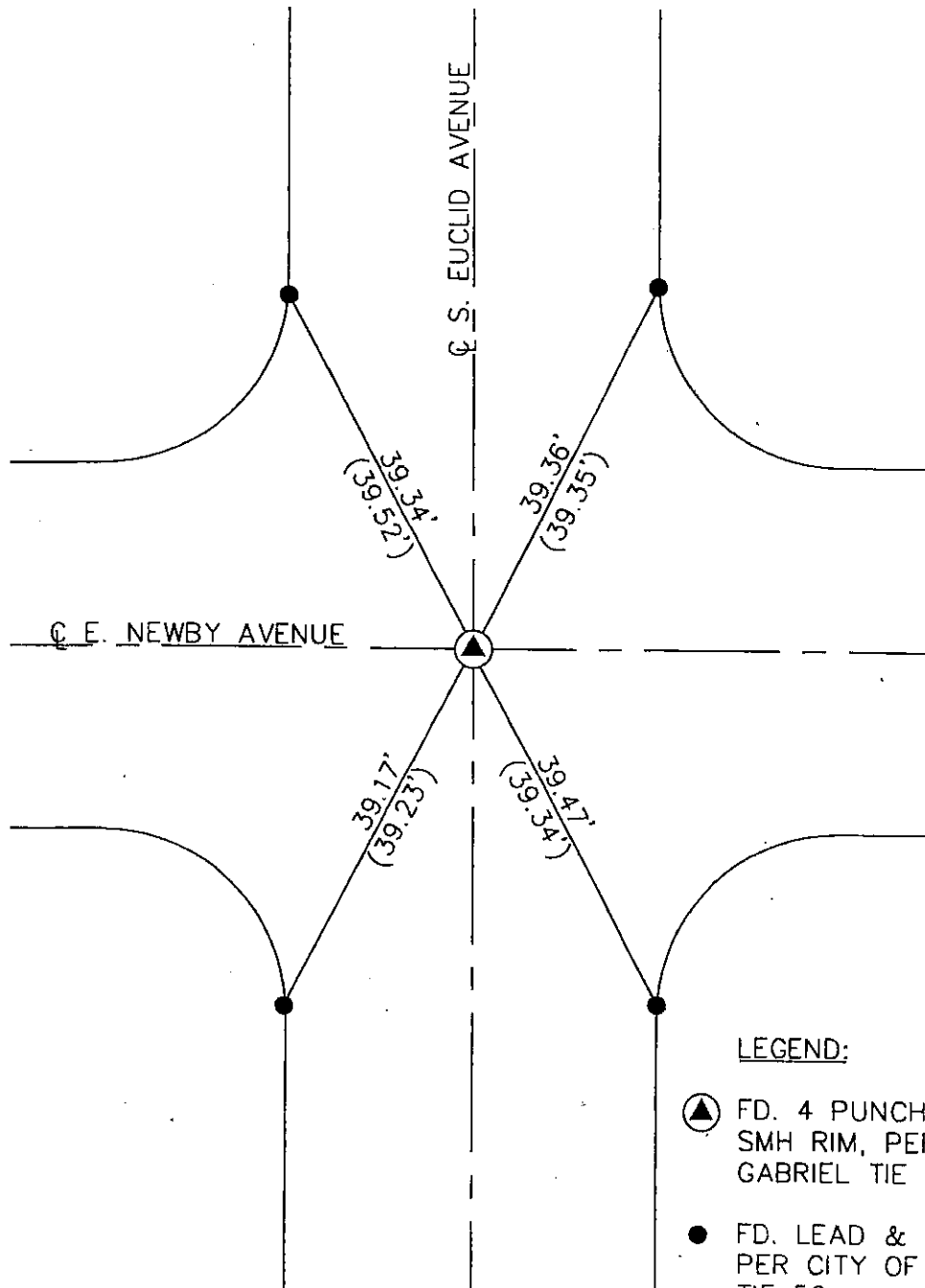
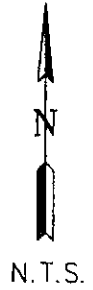
Title DEPUTY COUNTY SURVEYOR

County Surveyor's Comment \_\_\_\_\_  
\_\_\_\_\_



*JMG 10-6-5*

S. EUCLID AVENUE & E. NEWBY AVENUE



LEGEND:

- ⊙ FD. 4 PUNCH MARKS ON SMH RIM, PER CITY OF SAN GABRIEL TIE 50.
- FD. LEAD & TACK IN TC, PER CITY OF SAN GABRIEL TIE 50.
- ( ) RECORD PER CITY OF SAN GABRIEL TIE 50

NOTE: THESE TIES ARE FOR THE PURPOSE OF PERPETUATING THE FOUND MONUMENTATION. NO CLAIM IS MADE AS TO THE RELATIONSHIP OF THE POINTS OR LINES SHOWN HEREON TO THE TRUE BOUNDARY LOCATIONS.

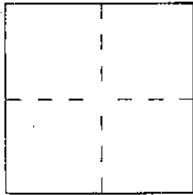


CORNER RECORD

Document Number 442

City of SAN GABRIEL County of LOS ANGELES, California

Brief Legal Description E. NEWBY AVENUE & LAFAYETTE STREET



CORNER TYPE

Government Corner  Control   
Meander  Property   
Rancho  Other   
Date of Survey July 22, 2005

COORDINATES (Optional)

N. \_\_\_\_\_  
E. \_\_\_\_\_  
Zone \_\_\_\_\_ NAD27  NAD83   
NAD83 Epoch \_\_\_\_\_  
Elev. \_\_\_\_\_  
Vert. Datum: NGVD29  NAVD88   
Meas. Units: Metric  Imperial   
U.S. Survey foot

Corner — Left as found  Found and tagged  Established  Reestablished  Rebuilt

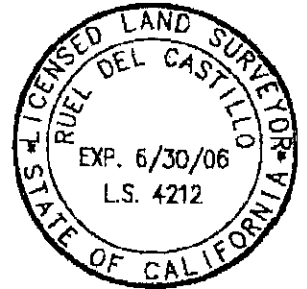
Identification and type of corner found; Evidence used to identify or procedure used to establish or reestablish the corner:  
SEE PAGE 2.

A description of the physical condition of the monument as found and as set or reset: SEE PAGE 2.

SURVEYOR'S STATEMENT

This Corner Record was prepared by me or under my direction in conformance with the Land Surveyor's Act on SEPTEMBER 6, 2005

Signed Ruel del Castillo L.S. or R.C.E. No. 4212  
EXP. 6/30/06



COUNTY SURVEYOR'S STATEMENT

This Corner Record was received SEP 14 2005  
and examined and filed OCT 12 2005

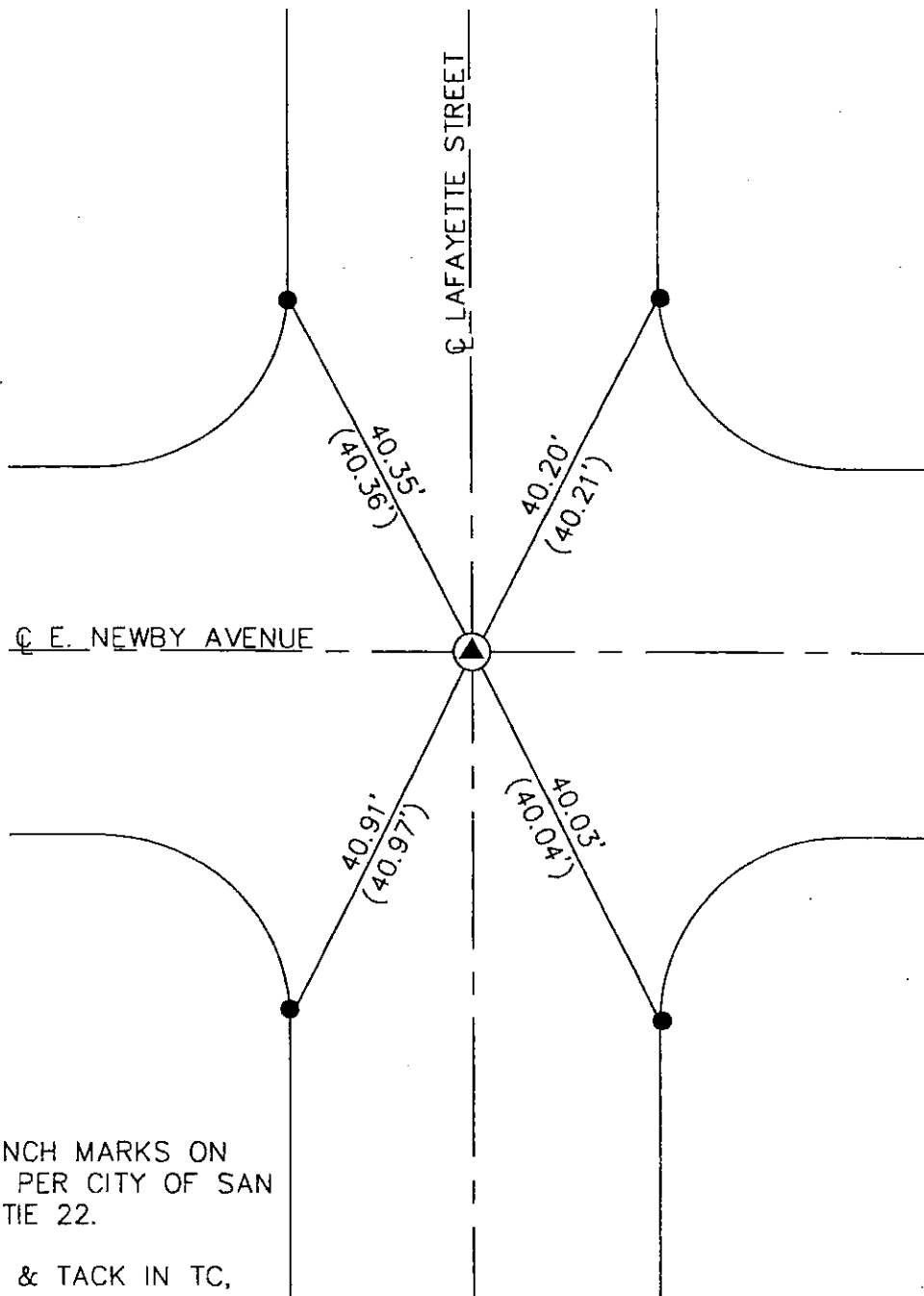
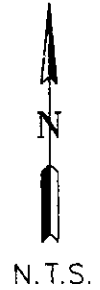
Signed Curt O'Bryan L.S. or R.C.E. No. 6388  
Title DEPUTY COUNTY SURVEYOR



County Surveyor's Comment \_\_\_\_\_

File 10-6-5

E. NEWBY AVENUE & LAFAYETTE STREET



LEGEND:

- ▲ FD. 8 PUNCH MARKS ON SMH RIM, PER CITY OF SAN GABRIEL TIE 22.
- FD. LEAD & TACK IN TC, PER CITY OF SAN GABRIEL TIE 22.
- ( ) RECORD PER CITY OF SAN GABRIEL TIE 22

NOTE: THESE TIES ARE FOR THE PURPOSE OF PERPETUATING THE FOUND MONUMENTATION. NO CLAIM IS MADE AS TO THE RELATIONSHIP OF THE POINTS OR LINES SHOWN HEREON TO THE TRUE BOUNDARY LOCATIONS.

CORNER RECORD

PWFB 1425

Document Number

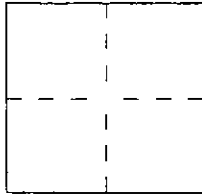
444

City of SAN GABRIEL

County of LOS ANGELES

California

Brief Legal Description WALNUT STREET & E. NEWBY AVENUE



CORNER TYPE

- Government Corner  Control
- Meander  Property
- Rancho  Other

Date of Survey July 22, 2005

COORDINATES (Optional)

N. \_\_\_\_\_  
 E. \_\_\_\_\_  
 Zone \_\_\_\_\_ NAD27  NAD83   
 NAD83 Epoch \_\_\_\_\_  
 Elev. \_\_\_\_\_  
 Vert. Datum: NGVD29  NAVD88   
 Meas. Units: Metric  Imperial   
 U.S. Survey foot

Corner — Left as found  Found and tagged  Established  Reestablished  Rebuilt

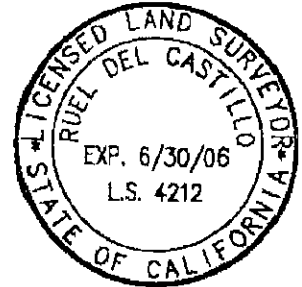
Identification and type of corner found; Evidence used to identify or procedure used to establish or reestablish the corner:  
SEE PAGE 2.

A description of the physical condition of the monument as found and as set or reset: SEE PAGE 2.

SURVEYOR'S STATEMENT

This Corner Record was prepared by me or under my direction in conformance with the Land Surveyor's Act on SEPTEMBER 6, 2005

Signed Ruel del Castillo L.S. or R.C.E. No. 4212  
EXP. 6/30/06



COUNTY SURVEYOR'S STATEMENT

This Corner Record was received SEP 14 2005

and examined and filed OCT 12 2005

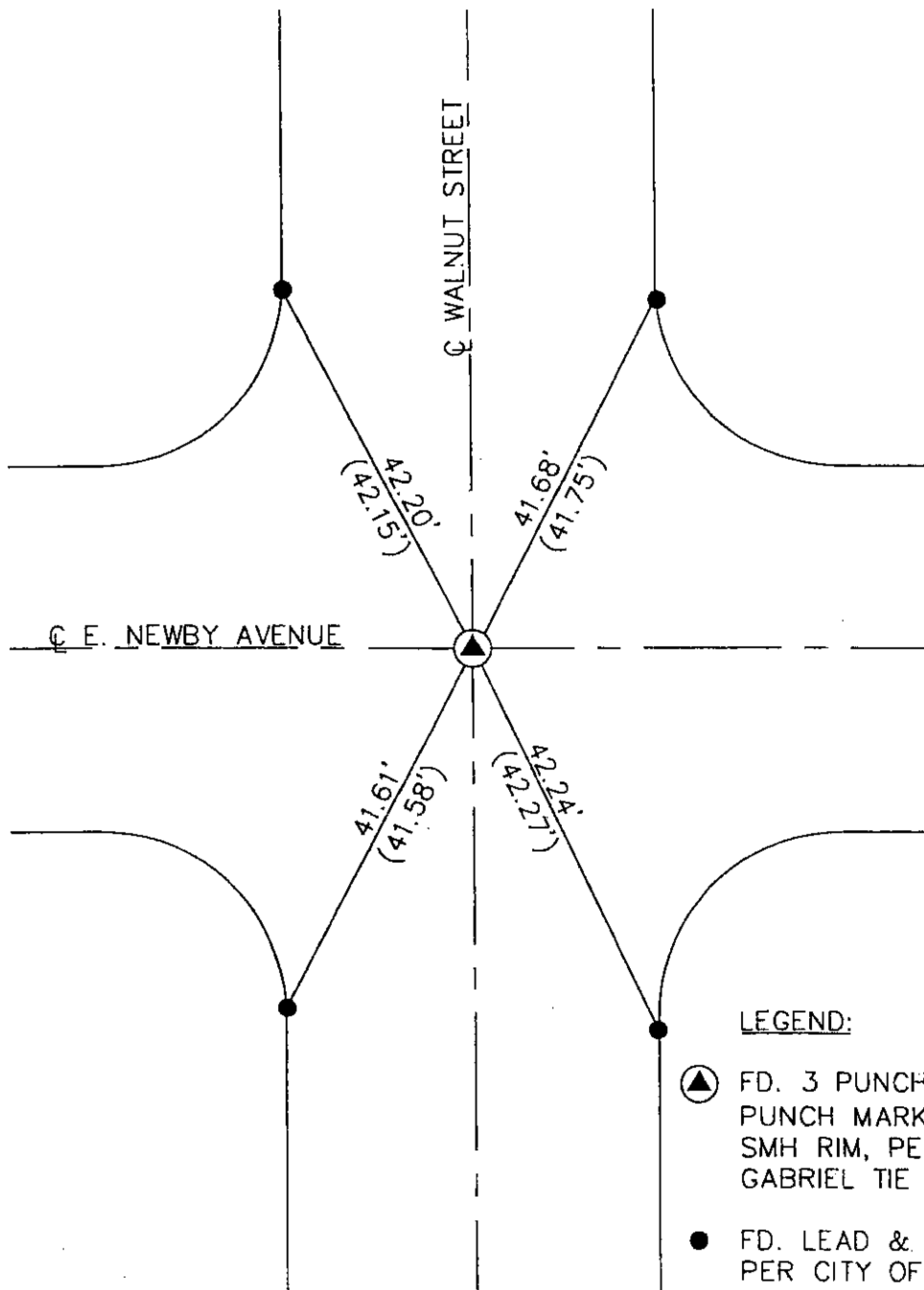
Signed Curt M. O'Bryan L.S. or R.G.E. No. 6388  
Title DEPUTY COUNTY SURVEYOR



County Surveyor's Comment

*5mb-10-6-5*

WALNUT STREET & E. NEWBY AVENUE



LEGEND:

- FD. 3 PUNCH MARKS & 6 PUNCH MARKS W/LINES ON SMH RIM, PER CITY OF SAN GABRIEL TIE 49.
- FD. LEAD & TACK IN TC, PER CITY OF SAN GABRIEL TIE 49.
- RECORD PER CITY OF SAN GABRIEL TIE 49

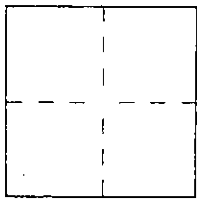
NOTE: THESE TIES ARE FOR THE PURPOSE OF PERPETUATING THE FOUND MONUMENTATION. NO CLAIM IS MADE AS TO THE RELATIONSHIP OF THE POINTS OR LINES SHOWN HEREON TO THE TRUE BOUNDARY LOCATIONS.

CORNER RECORD <sup>PWFB</sup> 1425

Document Number 446

City of SAN GABRIEL County of LOS ANGELES, California

Brief Legal Description S. DEL MAR AVENUE & E. CHESTNUT AVENUE



CORNER TYPE

- Government Corner  Control
- Meander  Property
- Rancho  Other

Date of Survey July 22, 2005

COORDINATES (Optional)

N. \_\_\_\_\_  
 E. \_\_\_\_\_  
 Zone \_\_\_\_\_ NAD27  NAD83   
 NAD83 Epoch \_\_\_\_\_  
 Elev. \_\_\_\_\_  
 Vert. Datum: NGVD29  NAVD88   
 Meas. Units: Metric  Imperial   
 U.S. Survey foot

Corner — Left as found  Found and tagged  Established  Reestablished  Rebuilt

Identification and type of corner found; Evidence used to identify or procedure used to establish or reestablish the corner:  
SEE PAGE 2.

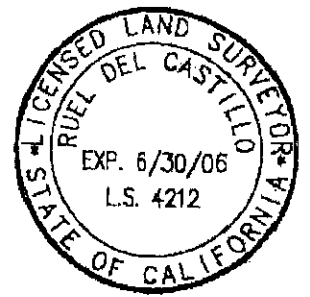
A description of the physical condition of the monument as found and as set or reset: SEE PAGE 2.

SURVEYOR'S STATEMENT

This Corner Record was prepared by me or under my direction in conformance with the Land Surveyor's Act on SEPTEMBER 6, 2005

Signed Ruel del Castillo L.S. or R.C.E. No. 4212

EXP. 6/30/06



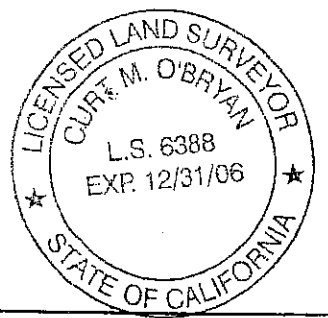
COUNTY SURVEYOR'S STATEMENT

This Corner Record was received SEP 14 2005

and examined and filed OCT 12 2005

Signed Curt M. O'Bryan L.S. or R.C.E. No. 6388

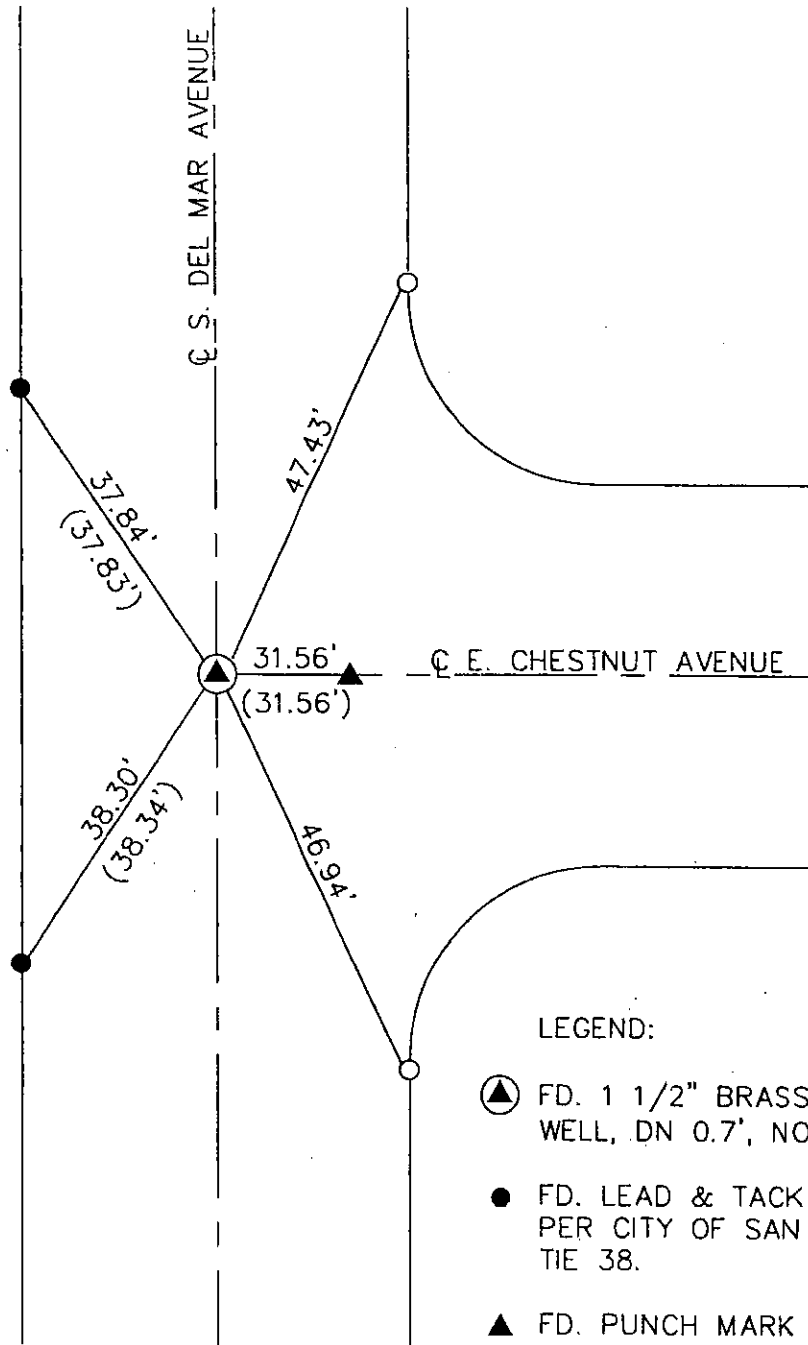
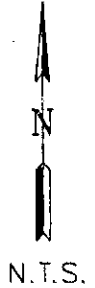
Title DEPUTY COUNTY SURVEYOR



County Surveyor's Comment \_\_\_\_\_

EMG 10-5-05

S. DEL MAR AVENUE & E. CHESTNUT AVENUE



LEGEND:

- ⊙ FD. 1 1/2" BRASS CAP IN WELL, DN 0.7', NO REF.
- FD. LEAD & TACK IN TC PER CITY OF SAN GABRIEL TIE 38.
- ▲ FD. PUNCH MARK ON MH RIM PER CITY OF SAN GABRIEL TIE 38.
- SET LEAD, TACK & TAG "LS 4212 TIE" IN TC.
- ( ) RECORD PER CITY OF SAN GABRIEL TIE 38

NOTE: THESE TIES ARE FOR THE PURPOSE OF PERPETUATING THE FOUND MONUMENTATION. NO CLAIM IS MADE AS TO THE RELATIONSHIP OF THE POINTS OR LINES SHOWN HEREON TO THE TRUE BOUNDARY LOCATIONS.